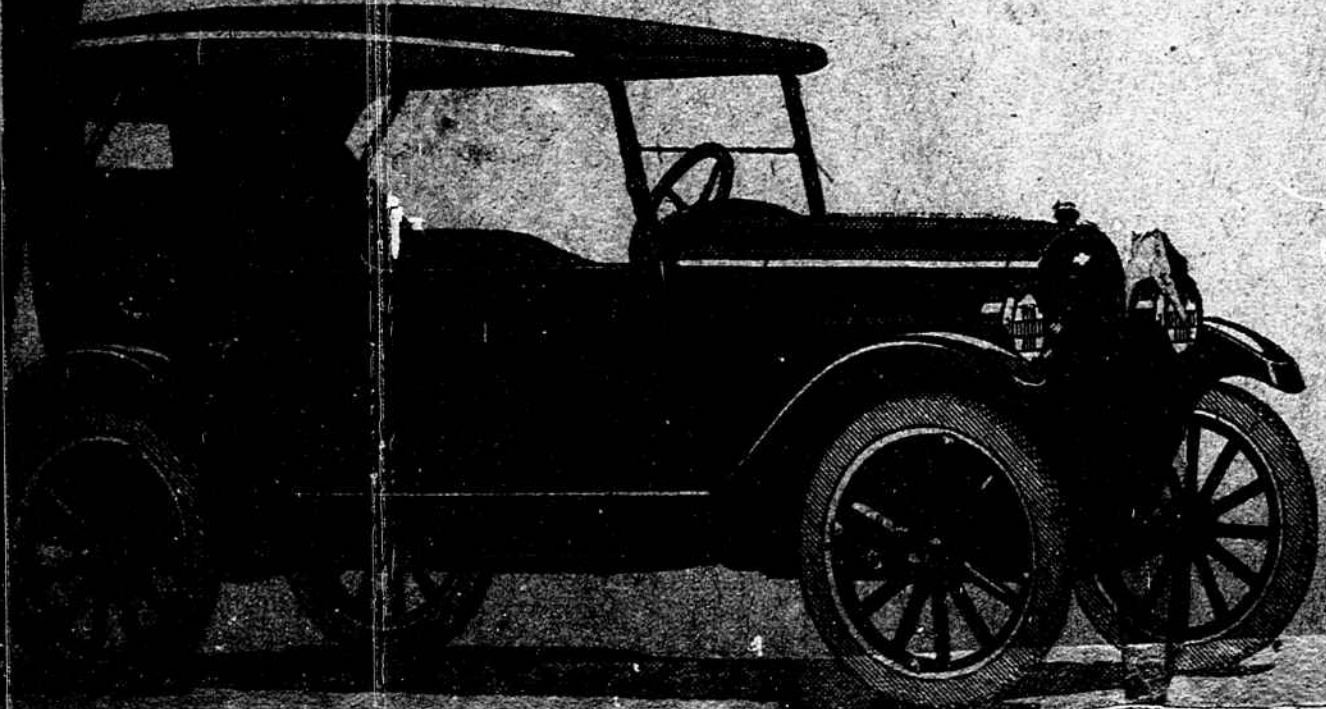


Our Favorite

WIN

Prizes in Dispatch-Saleman's Club Campaign



\$300.00 1923 Model Chevrolet is the First Grand Prize

It comes full standard equipment, consisting of combination dash and full headlights, anti-glare mirror, tail lamp and instrument board lamp, motor-driven horn, gasoline gauge, tire carrier with spare, demountable rim, jack, Alemite grease gun and a full set of tools.

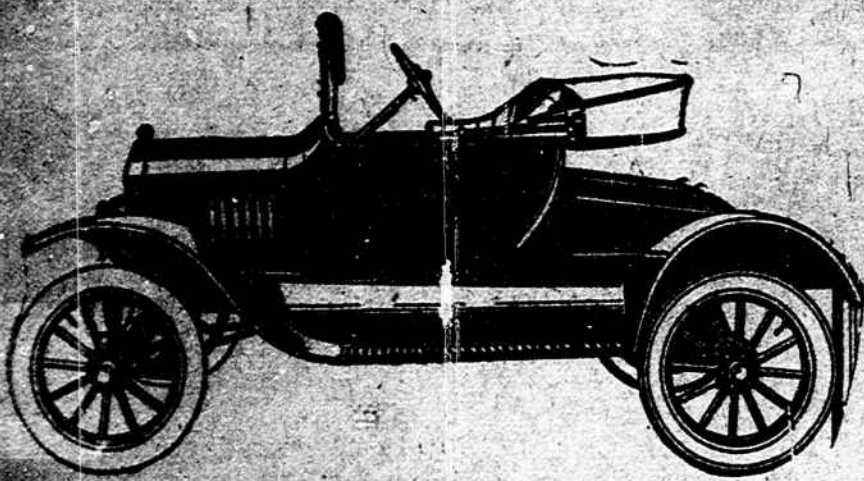
With its new lines and its numerous refinements the 1923 model Chevrolet bids fair to eclipse the enviable record it has made in the past. It has been re-designed. Mechanically and in point of comfort and convenience it presents many improvements.

In giving this Chevrolet model S. B. McMaster and The Dispatch-News knows the winner will be more than well paid for work done in the campaign. The car can be seen any day on the floor of the S. B. McMaster salesroom, and will be delivered immediately at the close of the campaign to the winner.

Second Prize

THIRD PRIZE

\$170 Victrola, Mahogany Cabinet, including a dozen records of winner's selection. (Purchased of and on display at Harmon Drug Co.)



\$406 Ford Roadster

Fully equipped with electric lights and self-starter.

(Purchased of and on display at DuPre Motor Co., Lexington, S. C.)

Every \$1.50 Subscription Gives Your Friend 5,000 Votes

NOTICE TRIPASSERS.

This is to notify all persons not to fish, trap, hunt or trespass in any way whatever upon our lands as the law will be strictly enforced against all trespassers.

R. L. Connelley, C. L. Epting, D. I. Epting, Frank Sons. 4w-p

CLERK'S SALE.

State of South Carolina, County of Lexington.—Court of Common Pleas.

Hattie Bess Brabham, Plaintiff, versus Robert C. Brabham, et al., Defendants.

By virtue of authority vested in me by Order of the Court in the above entitled Cause, I will sell in the town of Batesburg, S. C., between the hours of ten a. m. and twelve m. at public auction to the highest bidder, on the 21st day of December A. D. 1922, upon the terms and conditions hereinafter set forth, the following lot of land:

"All of that certain piece, parcel or lot of land situate, lying and being in the town of Batesburg, County of Lexington, and State aforesaid, and having the following dimensions, commencing at a corner of L. D. Cullum's lot on south of Railroad street and running along his line 207 feet to a ditch and thence along said ditch 100 feet, thence northwest 273 feet to south Railroad street, thence along said street 89 feet starting point, and bounded as follows: on the north by Railroad Street, on the east by lands of R. C. Miller, on the south by E. C. Ridgell, and on the west by L. D. Cullum, or a more accurate description see plat made by E. L. Hartley, Surveyor, January 15, 1914."

Terms of sale: For Cash, the successful bidder to pay for papers, revenue stamps, recording, etc., and provided that as an earnest of good faith the successful bidder or bidders shall deposit with the said Clerk of Court within thirty minutes after the property is bid off ten per cent. of the purchase price thereof, and in case this requirement is not complied with the said Clerk of Court shall immediately without further advertisement, or at another salesday to be fixed by him, after giving due and legal advertisement, resell the said property at the risk of the former bidder.

H. L. HARMON

Clerk of Court.

Timmerman & Graham, Attorneys for Plaintiff.

November 24th, 1922. 3w. 1d.

TAX NOTICE.

Lexington, S. C., Nov. 1, 1922. Public notice is hereby given that State, County and School Taxes for Lexington county will be received by me from November 1st to December 31st, inclusive:

The levy is as follows:
State purposes 7 1-2 mills
County ordinary 6 mills
For Augusta highway 3 mills
For past indebtedness 4 mills
For weak schools 1-2 mills
For constitutional school. 3 mills

Total 24 mills
Special tax as follows:

District No.	Mills
Special and bonds 1	12
Special and bonds 8	14
Special and bonds 14	8
Special and bonds 15	24
Special and bonds 18	36
Special and bonds 22	12
Special and bonds 25	12
Special and bonds 27	26
Special and bonds 29	18
Special and bonds 36	6
Special and bonds 37	20
Special and bonds 43	26
Special and bonds 53	18
Special and bonds 60	32
Special and bonds 62	12
Special and bonds 66	14
Special and bonds 76	12

Special levies for schools:
Nos. 6, 23, 24, 26, 28, 44;
47; 51; 70, 72 2
Nos. 2, 3, 4, 5, 17, 19, 20;
30, 31; 33; 39; 46, 48, 73,
75, 88 4
Nos. 41, 79 6
Nos. 7, 3, 19; 11; 13; 16;
21; 32; 34; 35; 38; 40;
42; 45; 50; 59; 61, 63; 64;
69; 71; 77; 78; 80; 82;
83; 84; 87; 8
Special levy 12
Special levy 49

According to law the County Auditor will add the following penalties; January 1, 1923, one per cent; February 1st, 1923, one per cent; March 1st 1923, 5 per cent. Total 7 per cent.

Poll Tax \$1.00. Ages 21 to 60 years.
Commutation Road Tax, optional \$5 or five days work, ages 18 to 55 years.
Dog tax \$1.25 per dog six months old or older, payable only during month of January, 1923.

TAX BOOKS WILL CLOSE MARCH 15, 1923.

Give township and school district in which each piece of property is located. Give full name—not initials. Send postage for reply and return of receipt.

W. J. SMITH.

WEDN

State of South Carolina, County of Lexington.—Court of Common Pleas.
C. E. Jones, Plaintiff, versus M. C. Laird, Defendant.
By virtue of authority vested in me by Order of the Court in the above entitled Cause, I will sell at public auction to the highest bidder, during the legal hours of sale, the first Monday in January next, the same being the first day of said month, the following described real estate, to-wit:

"All that piece, parcel, or tract of land lying, being and situate in Bull Swamp township, in the County of Lexington, South Carolina, containing twenty and eight-tenths acres, more or less, adjoining lands and bounded as follows: on the north by lands of D. F. Shumpert, on the east by Waters Ferry Road on the south by lands of J. H. Laird, on the west by lands of W. F. Laird, the said tract of land being the identical tract of land deeded to me by Morgan F. Laird on July 10, 1905, and recorded in Clerk of Court's office for Lexington County in Book X X at page 417, and more fully set out on plat made of the property of H. Rudolph Schoenberg, Surveyor on April 1, 1920, plat on file at Lexington Court House."

Terms of sale: Cash, purchaser to pay for papers, revenue stamps and recording fees.

H. L. HARMON

Clerk of Court.

TIMMERMAN & GRAHAM, Attorneys for Plaintiff.

Dec. 11th, 1922.

FLOWERS

Choice Flowers in Season.

SEEDS.

Sweet Peas, Pansy, Phlox, Poppy, Snapdragon, Grass, etc. Let us help you select best Seeds, Plants and Bulbs.

ROSE HILL GREENHOUSES

1225 Lady Street, Columbia, S. C.

"Everything Good To Eat"

AT THE

Sanitary Cafe

1345 Main Street, Columbia, S. C.

Home Cooking and Reasonable Prices,

"Little Different" from the others

Quick, Polite and attentive service.

Open Day and Night.

Are You Working With a Purpose

Work of any sort is pure drudgery if it means merely earning your existence. But with a purpose back of it you are working for a reward and it lightens your tasks and makes work a real pleasure.

Have a purpose in life! Make your life a success! Start by building up a savings account in this institution. It will furnish you with the means to attain your object. A comfortable home, independence, wealth—they all come within your reach if you persistently save.

Same rate of interest (4 per cent.) paid on both large and small accounts.

THE OLD RELIABLE

The Carolina National Bank of Columbia

W. A. Clark, President.

Jno. D. Bell, Asst. Cashier.

T. S. Bryan, V. President.

Jos. M. Bell, Cashier.

EVERY ONE LIKES TO BE REMEMBERED

Do not forget to remember the children with a bank account with us. It does not depreciate like many other gifts but increases in value, aided by the liberal interest which we add to the deposits.

Accounts are invited.

The Palmetto National Bank

COLUMBIA, S. C.

RESOURCES

\$10,000,000.00

4 Per Cent Interest Paid on Savings Accounts



GIFTS THAT LAST

DIAMONDS, PEARLS, WATCHES, CLOCKS, JEWELRY, SILVER,

CUT GLASS RELIABILITY SQUARE DEALING BOTTOM PRICES.

EVERETT JEWELER COLUMBIA, S. C.

1619 MAIN ST.

The Taylor Drug Co.

Druggists

1526 MAIN STREET

Phone 5098

Columbia, S. C.

Toilet articles, Prescriptions, Everything that goes to make a First-Class Drug Store.