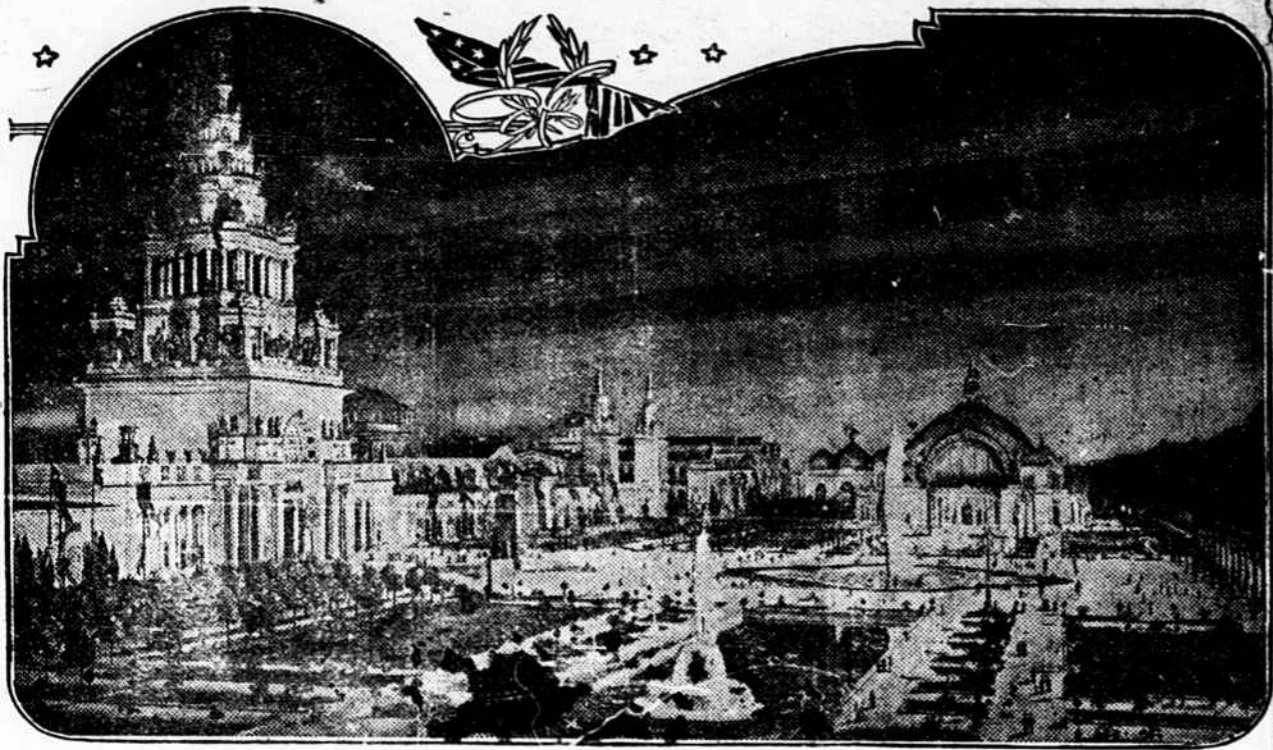


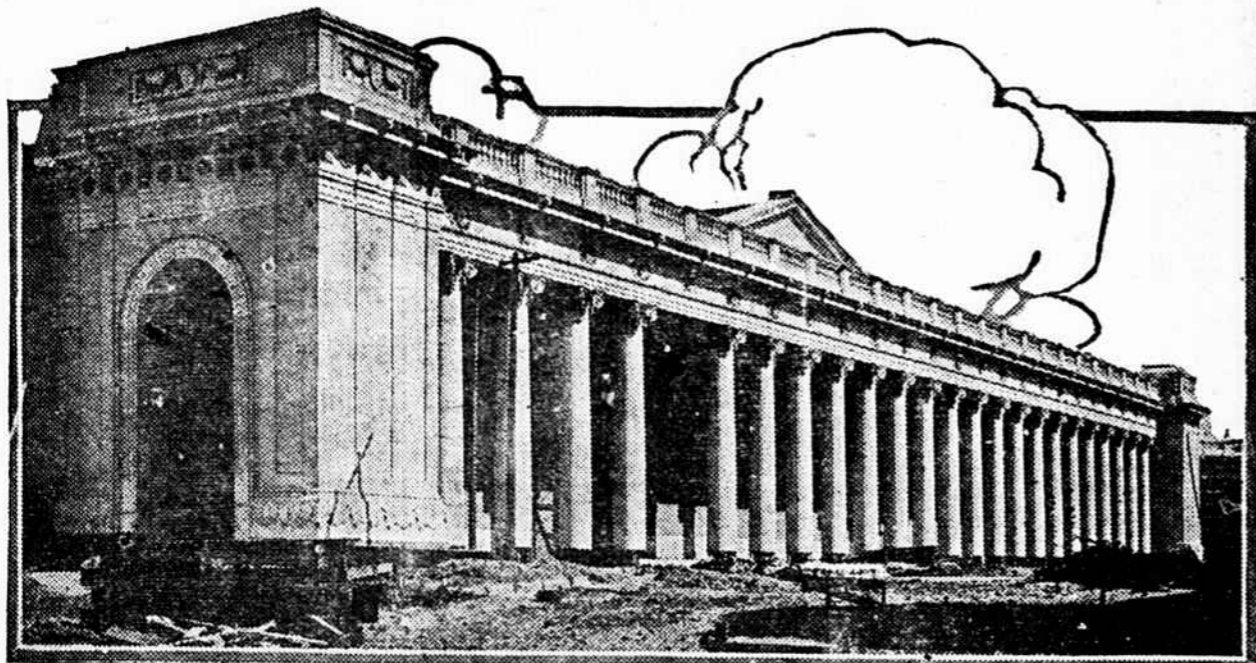
VAST SOUTH GARDENS OF THE MARVEL EXPOSITION CITY AT NIGHT.



Night view of South Gardens and main entrance to the Panama-Pacific International Exposition at San Francisco in 1915. Dominating the scene at the left of the picture is the Tower of Jewels, rising some 485 feet into the air, its architectural lines marked with thousands of glittering hand-polished crystals of many colors and its whole surface softly glowing with the reflected light from the arcs which are hidden from the spectator. Further down the facade, at about the center of the picture, may be seen the two slender towers which guard the entrance to the Court of Palms and directly in front of the Tower of Jewels is A. Stirling Calder's "Fountain of Energy." In the background at the extreme left may be seen the top of the triumphal Arch of the Rising Sun, surmounted by the group "The Nations of the East."

Copyright, 1914, by Panama-Pacific International Exposition Company.

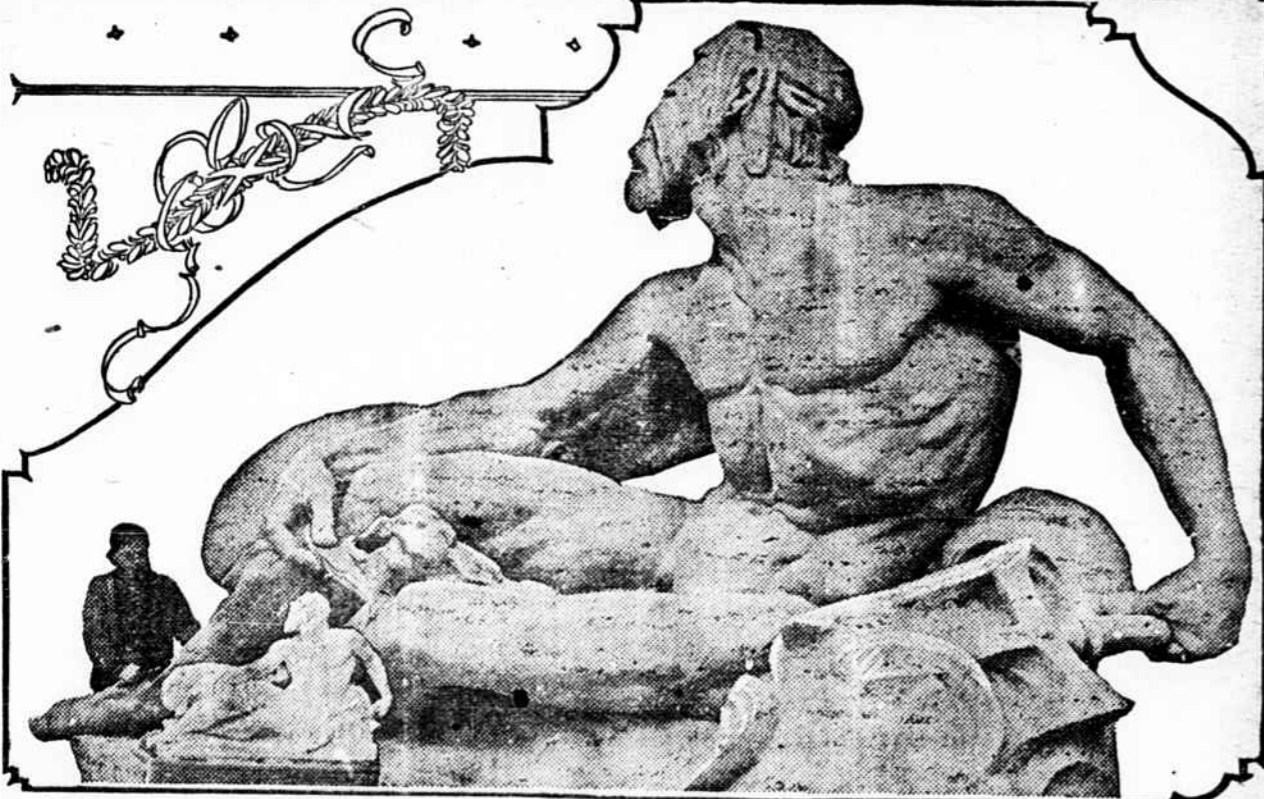
MASSIVE COLONNADE OF THE COURT OF FOUR SEASONS



Copyright, 1914, by Panama-Pacific International Exposition Company.

Colonnade, entrance of the Court of the Four Seasons upon the esplanade on San Francisco harbor and screening the west facade of the Palace of Agriculture. One of the columns of the colonnade has been temporarily removed to permit freight trains to enter the palace. Panama-Pacific International Exposition, San Francisco, 1915.

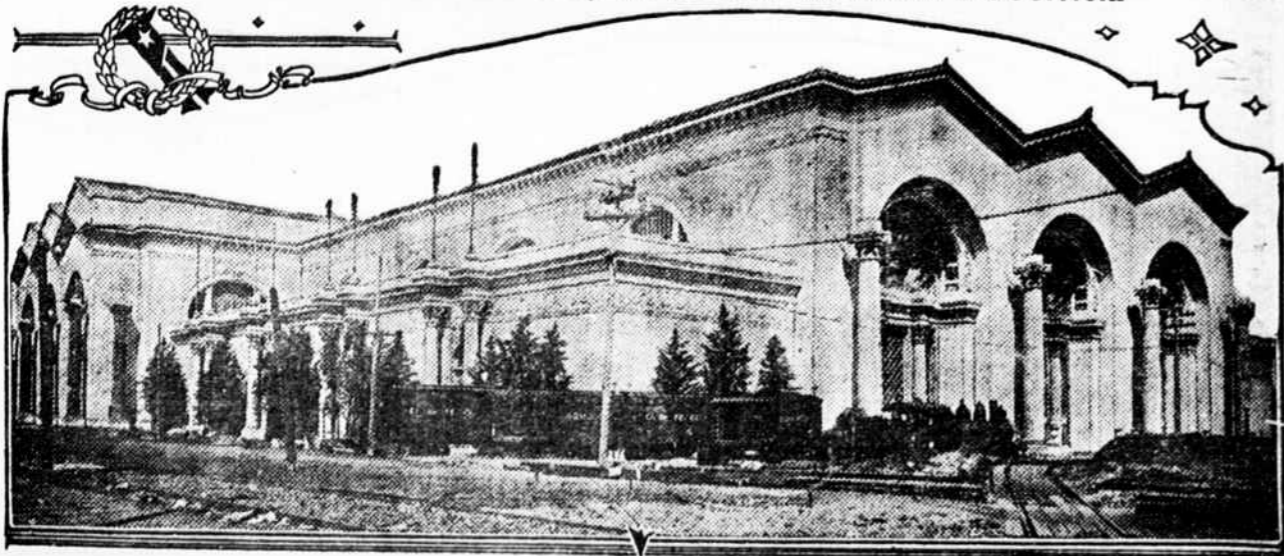
FAMOUS SCULPTOR'S CONCEPTION OF "WATER," FOR COURT OF THE UNIVERSE.



Scene in one of the sculptural warehouses on the exposition grounds. The figure above is that of a remarkable sculptural composition by Robert I. Aitkin, one of the most brilliant of American sculptors. The figure, representing the sculptor's conception of "Water," is a companion piece to three other symbolical sculptures—"Fire," "Earth" and "Air." The four figures, typifying the elements, will flank the descents into a vast sunken garden in the superb court of honor, the Court of the Universe. On the left may be seen the original model from which the figure was enlarged.

Copyright, 1914, by Panama-Pacific International Exposition Company.

HUGE PALACE OF MACHINERY AT WORLD'S GREATEST EXPOSITION.



Copyright, 1914, by Panama-Pacific International Exposition Company.

The great Palace of Machinery as seen from its south facade. The mechanical triumphs of the world will be displayed in the great Palace of Machinery at the Panama-Pacific International Exposition at San Francisco next year. This colossal structure is almost a thousand feet long, four hundred feet wide and is 135 feet high. The installation of exhibits in the huge structure has already begun. Three vessels the size of the world's largest steamship could easily be placed in this vast structure and with room to spare.

To Those Who Owe Us

We tried to help you by letting you have supplies when you ask us. And again we tried to help you by offering to take cotton on your accounts at 10c when we could get only 7 1/2. Now we wish to do everything we can to help you but we are bound to meet our obligations and we cannot extend this offer longer than Oct. 15th. After this date we will pay market price.

Now we must collect. So don't blame us if you have to sell your cotton for 7c.

Yours for business

PAGELAND MERCANTILE CO.

Wood's Trade Mark

Crimson Clover

Is Best Quality Obtainable, of High Tested Germination and Purity.

Crimson Clover is a wonderful soil-improver; also makes splendid fall, winter and spring grazing, the earliest green feed, or a good hay crop.

A crop of Crimson Clover turned under is equal to a good application of stable manure, and its value as a soil-improver is worth \$20. to \$30. per acre.

Wood's Descriptive Fall Catalog giving full information about **CRIMSON CLOVER, ALFALFA, WINTER VETCH,** and all FARM and GARDEN SEEDS for Fall sowing, mailed on request. Write for Catalog and prices of any Seeds required.

T. W. WOOD & SONS, Seedsmen, - Richmond, Va.



I am looking for WORK!!

I am a Soap-Maker.
I am a Scrubber.
I am a Cleaner.
I am a Dirt Eater.
I am a Disinfectant.

I will wash clothes whiter and with less rubbing. It's the RUB that ruins. I am 'from Missouri' and will show you for five cents.

I am Red Devil Lye
5c. FOR GREAT BIG CANS.
Half the usual price.
SAVE MY LABELS.

Sow Crimson Clover and Save Fertilizer Bills

The indications are that prices of fertilizer the coming season will be much higher than usual, owing to the fact that the supply of fertilizer materials will be largely cut off on account of the European war. This should cause farmers everywhere to put land in crops that will save fertilizer bills. Nothing will do this better than Crimson Clover. It is unquestionably one of the best soil-improvers that can be put in, and wherever it is grown, it gives largely increased crops of corn, cotton and tobacco.

We have secured more liberal supplies of Crimson Clover than was expected and will be able to sell at much more reasonable prices than was anticipated.

WOOD'S CROP SPECIAL gives full and interesting information about the fertilizing value of Crimson Clover; also about other seeds for Fall sowing. Write for Crop Special and prices of any seeds required.

T. W. WOOD & SONS, Seedsmen, - Richmond, Va.

Seasonable Farm Implements and Farm Machinery.

THE IMPLEMENT COMPANY'S special bulletin, just issued, tells all about the advantages and profitable uses of

Cider and Sorghum Mills,
Grain and Seed Drills,
Special Drill for seeding Crimson Clover in Corn.
Disk Cultivators,
Whirlwind Silo Fillers,
Gasoline and Steam Engines,
American Field Fencing,
American Steel Fence Posts,
The modern development in fencing.
The Best of FARM WAGONS,
Buggies and Runabouts,
Rubber and Galvanized Roofing.

We will take pleasure in mailing this Special Bulletin upon request, and quoting prices on any Farm Supplies required. Write us.

THE IMPLEMENT CO.,
1302 E. Main St., - Richmond, Va.

CHERO COLA

The New Sanitary Drink

Every bottle is boiled in a germ-killing solution before it is refilled, and everything about our plant is as sanitary as it is possible to make it

It is the very drink you have been looking for.

Monroe Chero Cola Bottling Co.
MONROE, N. C.

Dr. R. L. McManus
DENTIST
Pageland, S. C.

Will be at Jefferson on Wednesday and at Ruby Thursday, Mt. Croghan Friday of each week, remainder of time at Pageland. Office in rear of Joseph's new Store, Pageland, S. C.