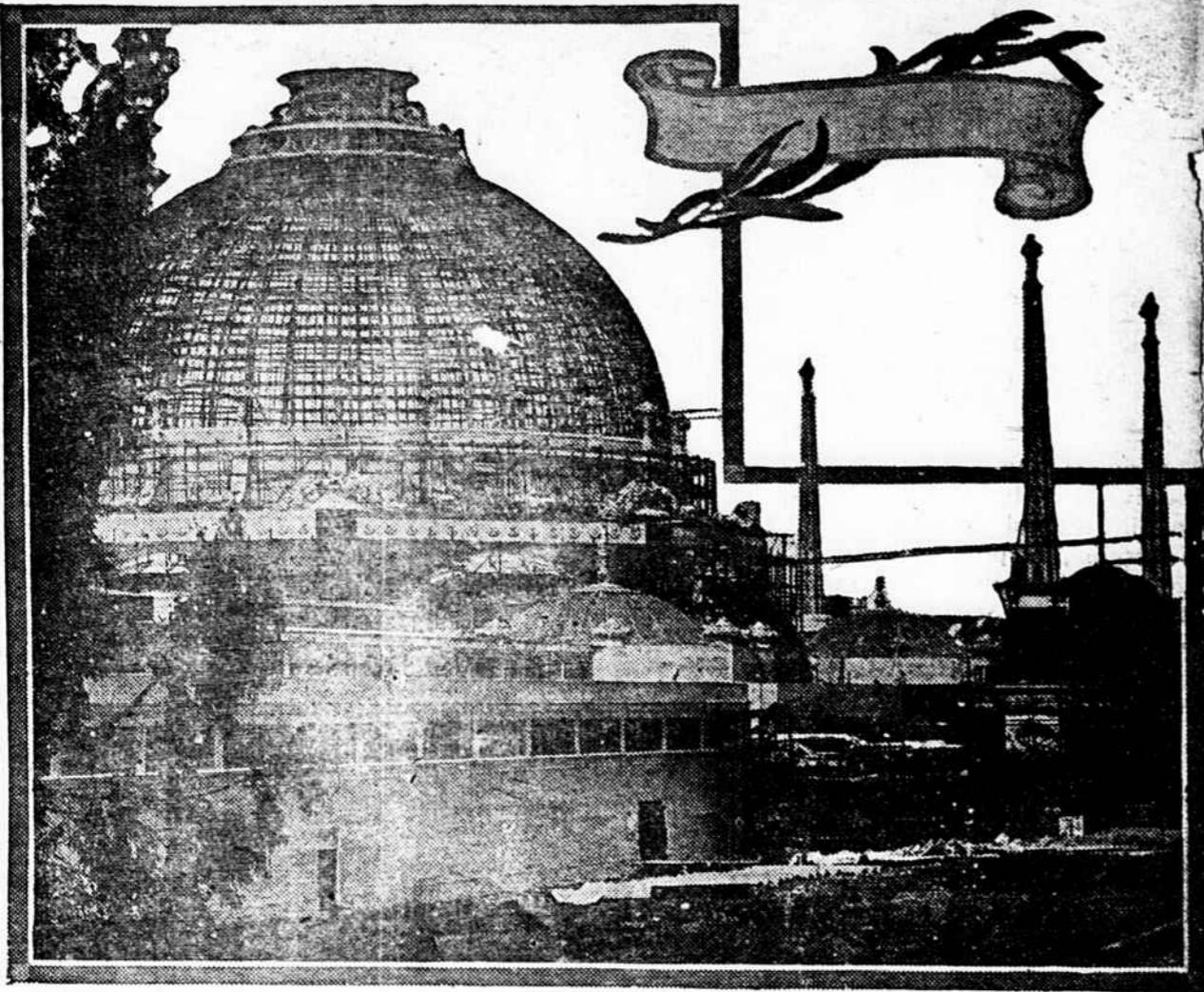


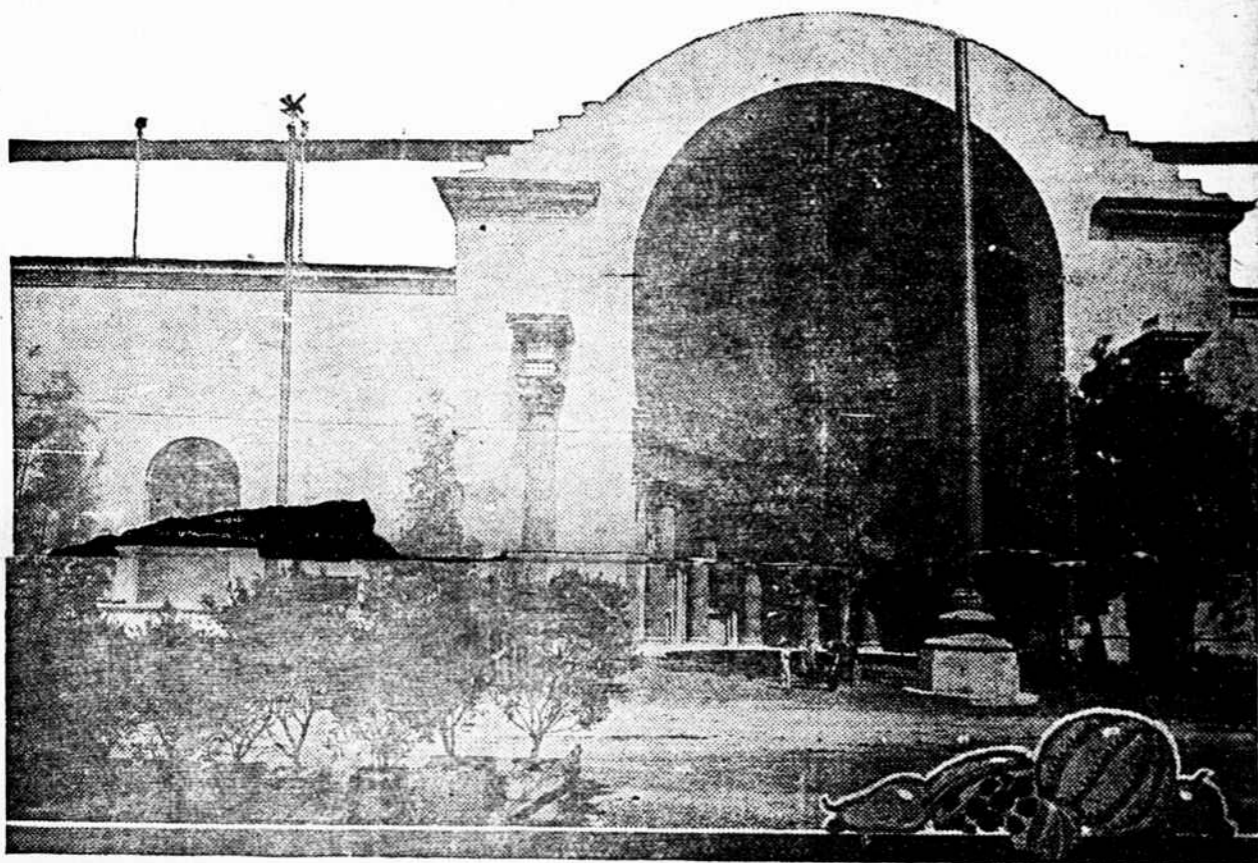
GREAT DOME OF THE WONDERFUL PALACE OF HORTICULTURE.



Copyright, 1914, by Panama Pacific International Exposition Company.

A view of the Palace of Horticulture, showing completed pylon with decorative sculpture in position. The minor domes are to carry an arrangement of vines and flowers that will form a screen for the lights. The main dome is 186 feet in height and 152 feet in diameter, being the largest hemispherical dome in the world. The Panama-Pacific International Exposition will open in San Francisco in February, 1915.

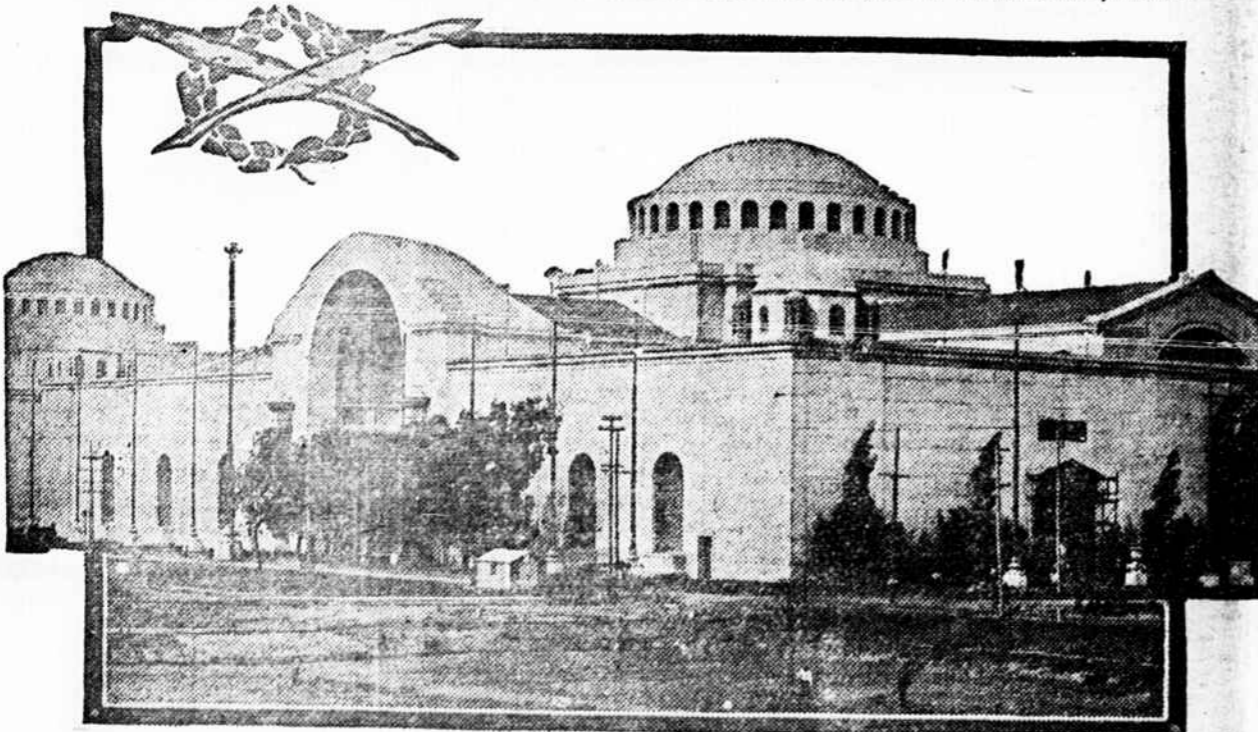
ENTRANCE TO THE VAST EXHIBIT PALACE OF FOOD PRODUCTS.



Copyright, 1914, by Panama Pacific International Exposition Company.

This photograph shows the great western portal or entranceway of the huge Palace of Food Products. The half-dome is known as the Half-Dome of Vigor and is 113 feet in height. Brilliant, riotous colors are employed in the mosaic in the vault of the half-dome, which was designed by Mr. Jules Guerin, one of the most celebrated decorative artists in America. To the left are seen some of the ornamental shrubs that will be in bloom when the Panama-Pacific International Exposition opens at San Francisco in February, 1915.

PALACE OF EDUCATION AT AMERICA'S GREAT EXPOSITION, SAN FRANCISCO, 1915.



Copyright, 1914, by Panama Pacific International Exposition Company.

This palace occupies a site at the southwest corner of the main group of exhibit palaces. To the left is the Half-Dome of Thought, constituting the main western entrance to the palace. This is one of two half-domes constituting the principal architectural embellishment of the western facade of the main group, the other being the Half-Dome of Vigor, the principal western entrance to the Palace of Food Products.

These domes are modeled after similar recesses in old Roman baths, or in buildings surrounding the Forum. Within the cool shade of these beautiful doorways, the leisurely gentlemen of old Rome were wont to gather for informal lectures and discussions.

Within the shadow of the Dome of Thought will be a semi-circle of eight columns, surmounted by figures by Ralph Stackpole, embodying ideas of intellectual development. Within the Dome of Vigor, a similar colonnade will be surmounted by figures by Earl Cummings, representative of the ideals of physical development. In the center of both entrances will be a fountain. The portals in the southern facade are Italian renaissance. W. B. Faville is the architect. The Panama-Pacific International Exposition opens in San Francisco in February, 1915.

A country editor wrote: you sent us didn't agree with us 'Brother, don't stop your paper just because you don't agree with the editor. The last cabbage either, but we didn't drop you from our subscription list on that account.'—Boston Transcript.

Hanna & Hunley
Attorneys
CHESTERFIELD, S. C.

SOME TELLING PRICES

Lot of 42-inch figured lawns worth 17 1-2 c. going at 10c. per yd. Nice Batists at 5c. per yd. Big lot of standard prints entirely new at 5c. Men's \$1.50 straw Hats at \$1.00, big lot of 50c. straw hats at 35c. each.

Men's Tan button shoes, new stock only \$1.50 per pair. Another big lot of shoes in other leathers and styles at \$1.50.

Men's \$1.00 overalls at 75c., childrens dresses, shirt-waist and waist patterns, skirts and gowns and in fact all Summer goods at your own price.

We are now receiving our new stock of men's and boy's clothing and can show you some beautiful suits.

Another lot of Tennis Oxfords just in.

If you need a drugget, rug or a good trunk come to see us before you buy.

P. S. We now have a good stock of those famous brands of flour Melrose and Liberty Bell.

PAGELAND MERCANTILE CO.

For Sale

One five-passenger Overland touring car in good running condition. A bargain for the one who comes first.

Also one good family horse and rubber tire buggy. A bargain, for we don't need either.

Pageland Motor Car Co.
Agents for the "Metz"

BUSY AS BEES

are the clerks in our bank, because we handle the biggest part of the business done in this section. We are patronized by the shrewdest and most careful business men, because they have faith in our conservative methods and perfect system of banking. We are soliciting the accounts of responsible firms and individuals, and all such will find it advantageous to do business with us.



The Bank of Pageland

PAGELAND, S. C.

Seasonable Farm Implements and Farm Machinery.

THE IMPLEMENT COMPANY'S special bulletin, just issued, tells all about the advantages and profitable uses of

Cider and Sorghum Mills,
Grain and Seed Drills,
Special Drill for seeding Crimson Clover in Corn.
Disk Cultivators,
Whirlwind Silo Fillers,
Gasoline and Steam Engines,
American Field Fencing,
American Steel Fence Posts,
The modern development in fencing.
The Best of FARM WAGONS,
Buggies and Runabouts,
Rubber and Galvanized Roofing.
We will take pleasure in mailing this Special Bulletin upon request, and quoting prices on any Farm Supplies required. Write us.

THE IMPLEMENT CO.,
1302 E. Main St., - Richmond, Va.

Notice

The Books of Registration for Chesterfield County will be open at the Court House until 30 days before the General Election.

S. B. Timmons,
E. T. White,
T. M. Belk,
Co. Registration Board.
(Advertisement)

Sale and Exchange Stables

I have opened up sale and exchange stables at the rear of Cato's store, and am now ready to buy, sell or swap. If you haven't what you want, see me.

R. F. SMITH.

Agents Wanted—to handle an article that will net you \$5.00 to \$30.00 a week. Write for full information. The Cheraw Specialty Co.