

## Vast Exhibit Palaces Are Already Completed and Installation of World's Exhibits Begun

THIRTY-SIX GREAT FOREIGN POWERS TO DISPLAY THEIR PROGRESS IN CONCLAVE OF NATIONS UNRIVALED IN HISTORY—RAILROADS GRANT LOW ROUND TRIPS—PLAN TODAY TO VISIT HUGE EXPOSITION.

An education such as one could not receive in a lifetime will be afforded through the great Panama-Pacific International Exposition at San Francisco next year.

At this exposition the people of the United States, joined by the nations of the world, will celebrate the official opening of the Panama canal. Hundreds of years from now the world will recall the opening of the Panama canal as one of the greatest events in the history of the United States, and indeed of the whole world.

At the great exposition, which will excel any universal exposition in the history of the world, thirty-six great nations will make elaborate government exhibits. A single South American country, the Argentine, is expending \$1,300,000 on its display, which will be the most comprehensive ever made by a South American country outside its own borders. Italy will show its priceless works of art; Canada will display its vast progress, and has already installed an elaborate exhibit in the huge Canadian Pavilion, built at a cost of \$300,000.

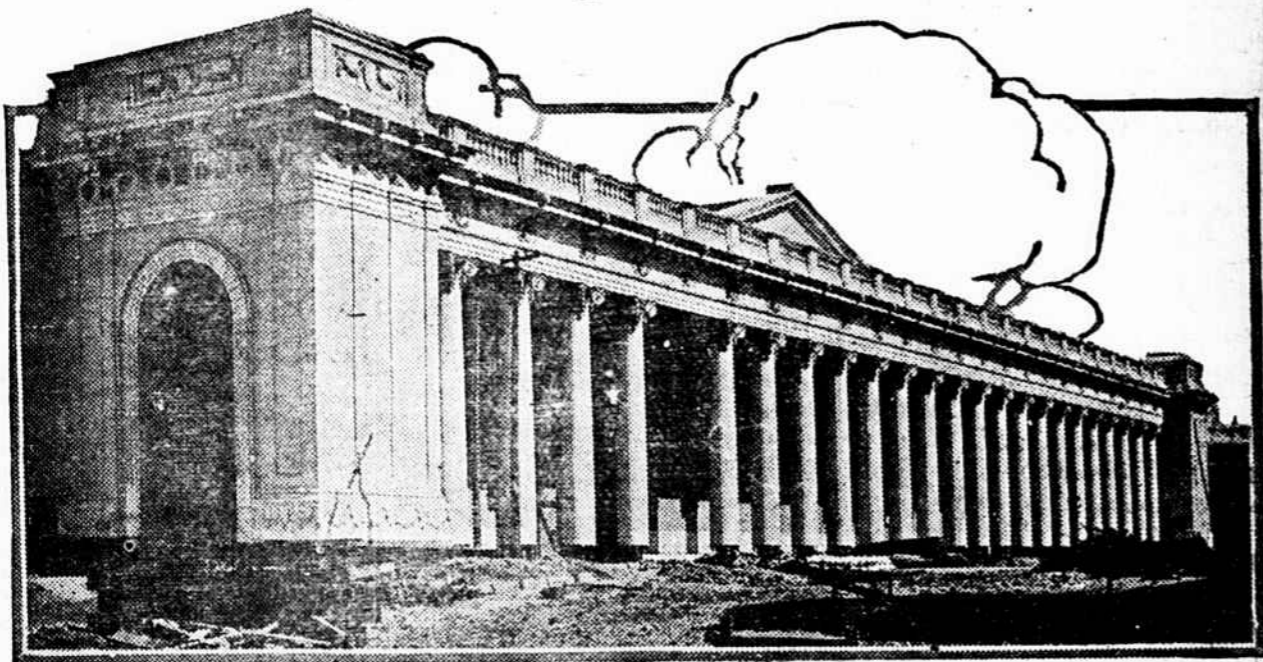
The states of the Union will make wonderful displays and those who do not know this great country as well as they should know it will have the opportunity to learn more of its wealth and progress and great institutions under favoring conditions and circumstances that they could obtain in no other way.

Some of the marvels of the Panama-Pacific International Exposition are depicted upon this page. The exposition opens on February 20, 1915, and closes December 4, 1915, remaining open, therefore, almost ten months. The railroads will grant low round trips with extraordinary privileges of routing. Any railroad agent will furnish you the particulars as to the exposition. If you wish further information about the exposition, take advantage of the following offer:

### ATTRACTIVE BOOK ON THE PANAMA-PACIFIC INTERNATIONAL EXPOSITION AND PANAMA CANAL MAILED FREE OF CHARGE.

A handsome book of sixty pages, profusely illustrated in colors and giving detailed descriptions of the Panama-Pacific International Exposition to be held in San Francisco from February 20 to December 4, 1915, and of the Panama canal and canal region, will be mailed by the Exposition free of charge to all inquirers. The booklet is intended as a general guide to prospective visitors and will also contain information concerning the great engineering feat which the exposition is to celebrate. Write to the Manager, Bureau of Publications, Panama-Pacific International Exposition, Exposition Building, San Francisco, for booklet.

### MASSIVE COLONNADE OF THE COURT OF FOUR SEASONS



Copyright, 1914, by Panama Pacific International Exposition Company.

Colonnade, entrance of the Court of the Four Seasons upon the esplanade on San Francisco harbor and screening the west facade of the Palace of Agriculture. One of the columns of the colonnade has been temporarily removed to permit freight trains to enter the palace. Panama-Pacific International Exposition, San Francisco, 1915.

# The Southeastern Life Insurance Co.

Home Office

Greenville South Carolina

Now in its ninth successful year  
June 30th market the close of the biggest,  
best six months in its history.

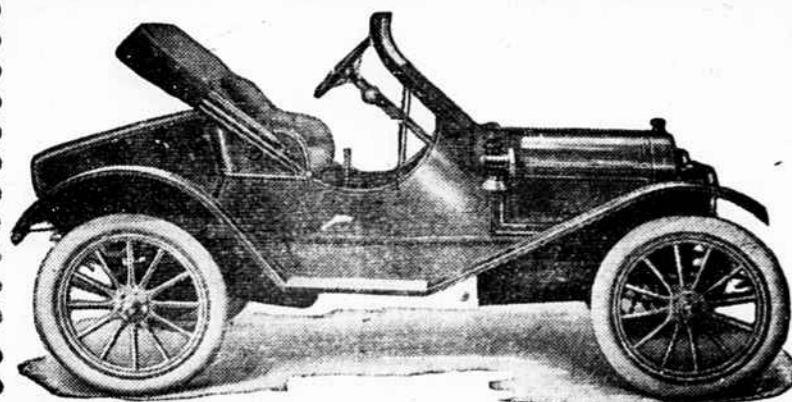
Over a million dollars insurance sold to citizens of Chesterfield County

Ask about our "Monthly Income Plan"

C. W. ESTES, GENERAL AGENCY

W. C. ELLIS, Cashier, CHERAW, S. C.

Metz 22 - \$475



THE PRACTICAL CAR, BUILT FOR REAL SERVICE.

At last a neat, powerful car may be bought at a low price. The Metz "22" is built for real service at the lowest possible cost. The weight is only 1,100 pounds, the motor is 22 1-2 horse power and it is an acknowledged hill climber.

It goes 28 to 32 miles on a gallon of gasoline. Do not buy until you see the Metz "22"

Fully equipped for \$475.

Pageland Motor Car Co.

## It's A Wise Woman

who puts a little money in the savings bank regularly. No woman can tell when she'll need money pretty badly. The Bank of Pageland has many women among its depositors. Why not prove your thrift and wisdom by becoming one of them.



The Bank of Pageland

PAGELAND, S. C.

Poverty is a crime only when it provides one with prison fare.

### Seasonable Farm Implements and Farm Machinery.

THE IMPLEMENT COMPANY'S special bulletin, just issued, tells all about the advantages and profitable uses of

Cider and Sorghum Mills,  
Grain and Seed Drills,  
Special Drill for seeding Crimson Clover in Corn.

Disk Cultivators,  
Whirlwind Silo Fillers,  
Gasoline and Steam Engines,  
American Field Fencing,  
American Steel Fence Posts,  
The modern development in fencing.

The Best of FARM WAGONS,  
Buggies and Runabouts,  
Rubber and Galvanized Roofing,  
We will take pleasure in mailing this Special Bulletin upon request, and quoting prices on any Farm Supplies required. Write us.

THE IMPLEMENT CO.,  
1302 E. Main St., - Richmond, Va.

### Notice

The Books of Registration for Chesterfield County will be open at the Court House until 30 days before the General Election.

S. B. Timmons,  
E. T. White,  
T. M. Belk,  
Co. Registration Board.  
(Advertisement)

### Notice

The books of Registration will be open at the following places on the dates named:

Pageland July 23rd.  
Mt. Croghan July 24th.  
Cheraw July 28th.  
McBee July 29 th.  
E. T. White, Wm. Belk, S. B. Timmons, members of Board of Registration.  
(Advertisement)

Hanna & Hunley  
Attorneys  
CHESTERFIELD, S. C.

## SOME TELLING PRICES

Lot of 42-inch figured lawns worth 17 1-2 c. going at 10c. per yd. Nice Batists at 5c. per yd. Big lot of standard prints entirely new at 5c. Men's \$1.50 straw Hats at \$1.00, big lot of 50c. straw hats at 35c. each.

Men's Tan button shoes, new stock only \$1.50 per pair. Another big lot of shoes in other leathers and styles at \$1.50.

Men's \$1.00 overalls at 75c., childrens dresses, shirt-waist and waist patterns, skirts and gowns and in fact all Summer goods at your own price.

We are now receiving our new stock of men's and boy's clothing and can show you some beautiful suits.

Another lot of Tennis Oxfords just in.

If you need a drugget, rug or a good trunk come to see us before you buy.

P. S. We now have a good stock of those famous brands of flour Melrose and Liberty Bell.

PAGELAND MERCANTILE CO.