

Marvelous Works of Art to be Shown at San Francisco

Thirty-six of the World's Navies Will Participate Officially Upon a Stupendous Scale—World's Noted Architects Create City of Palaces the Like of Which Man Has Never Beheld—England to Exhibit.

The photographs upon this page reveal just a few of the thousands of marvels that will be seen by the millions who visit the Panama-Pacific International Exposition in San Francisco next year.

The opening of the Panama canal is regarded by the nations as one of the most stupendous events in the history of the world, and in recognition of the great work at Panama there will be exhibited in San Francisco such a display of the world's progress as has never been seen before.

The news that England will exhibit at the Panama-Pacific International Exposition is evidence of the increasing interest that is everywhere taken in America's Panama canal celebration.

Thirty-six of the world's great nations will officially participate in the exposition. Here is the list: Argentina, Australia, Austria, Bolivia, Brazil, Bulgaria, Canada, Chile, Costa Rica, Cuba, Denmark, Dominican Republic, Ecuador, France, Guatemala, Haiti, Holland, Honduras, Italy, Japan, Liberia, New Zealand, Nicaragua, Panama, Peru, Portugal, Salvador, Sierra, Spain, Sweden, Turkey, Uruguay, Venezuela and Great Britain. The nations have appropriated enormous sums. The Argentine, for example, has appropriated \$1,300,000 gold for its display. Canada has appropriated \$600,000 and construction is far advanced on the great Canadian pavilion.

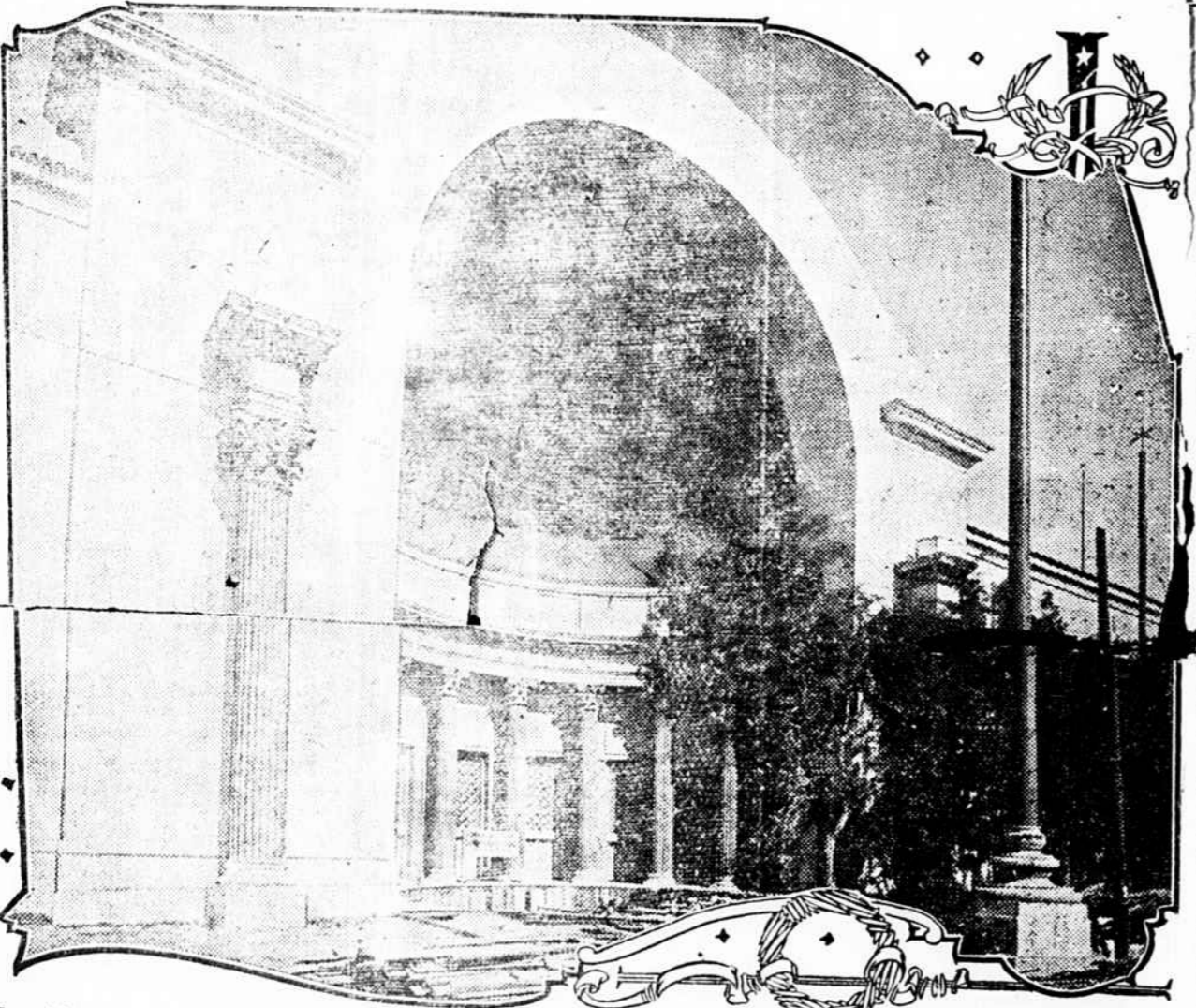
The natives of every civilized country on earth will be enabled at San Francisco to behold a surpassing view of the progress of their native land.

Throughout the United States and in foreign lands millions of people are planning to visit the exposition next year. At a recent meeting of the Transcontinental Passenger association it was decided to make great reductions in railroad fares. The exposition opens on February 20 and closes on December 4, 1915.

The exposition today is one of the sights of the world. The passenger on a steamer through the Golden Gate beholds the vast domes of the exposition palaces rising like the domes and minarets of a fabulous Oriental city. Before the main group of exposition palaces, which face north upon the harbor for more than one mile, a great sea esplanade has been constructed; this has been wonderfully landscaped with thousands of rare trees and shrubs brought from distant parts of the world. Here multitudes will gather during the exposition to view by day the assembled warships of the world's navies and at night a wonderful series of colored illuminations visible forty or fifty miles away. The entire exposition grounds parallel San Francisco harbor for almost three miles.

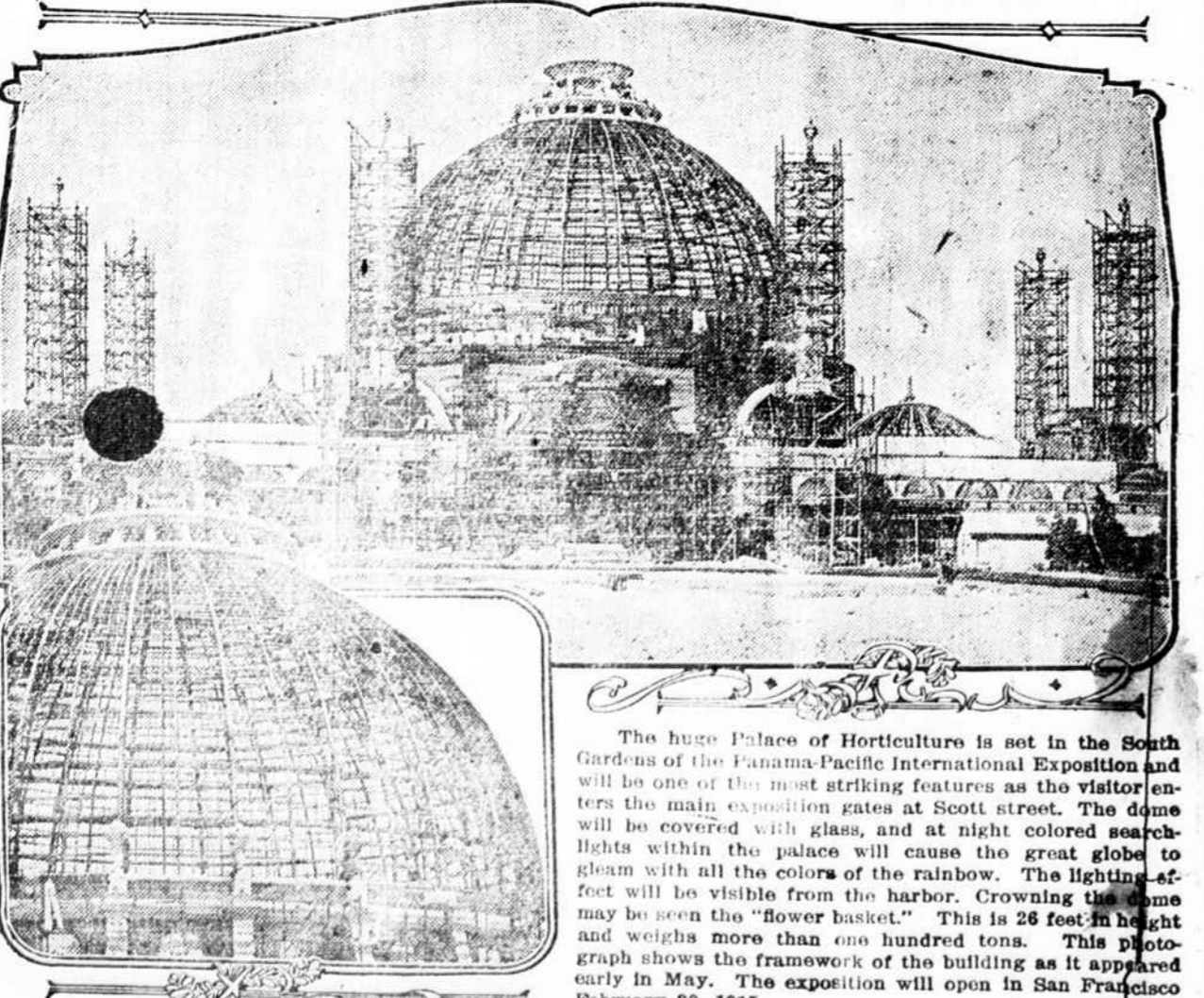
A HANDSOME book of sixty pages, illustrated profusely in colors and giving detailed descriptions of the Panama-Pacific International Exposition to be held in San Francisco from February 20 until December 4, 1915, and of the Panama canal and the canal region, will be mailed by the Panama-Pacific International Exposition free of charge to all inquirers. The booklet is intended as a general guide to prospective visitors and will also contain information concerning the great engineering feat which the exposition is to celebrate. Write to the Manager, the Bureau of Publications, Panama-Pacific International Exposition, Exposition building, San Francisco, for the booklet.

VIEW OF A HALF-DOME IN THE WONDERFUL PALACE OF EDUCATION.



Copyright, 1914, by Panama-Pacific International Exposition Company. This photograph shows a half-dome in the colossal Palace of Education at the Panama-Pacific International Exposition in San Francisco in 1915. The world's most noted artists, mural decorators and sculptors were engaged to decorate the exposition palaces and, as a result, the huge structures are indescribably beautiful. The interior of the dome is embellished with a superb mosaic of brilliant colors, designed under the supervision of Mr. Jules Guerin, the noted artist. The height to the top of the half-dome is 110 feet.

FIRST NEWS PICTURE OF THE WONDERFUL PALACE OF HORTICULTURE



A Nearer View of the Dome. Copyright, 1914, by Panama-Pacific International Exposition Company. The huge Palace of Horticulture is set in the South Gardens of the Panama-Pacific International Exposition and will be one of the most striking features as the visitor enters the main exposition gates at Scott street. The dome will be covered with glass, and at night colored searchlights within the palace will cause the great globe to gleam with all the colors of the rainbow. The lighting effect will be visible from the harbor. Crowning the dome may be seen the "flower basket." This is 26 feet in height and weighs more than one hundred tons. This photograph shows the framework of the building as it appeared early in May. The exposition will open in San Francisco February 20, 1915.

HAVE YOU EVER

looked over our bargain counters? If not, it might pay you to take a look. We are offering some rare bargains in many lines.

Many Sizes And Styles

of shoes in broken sizes going at less than we can buy them from the factory. Your size may be in the lot. If so it means a bargain for you.

Big Lot Sample Neck Wear almost at your own price.

Several Dozen men's half hose in plain and fancy stripes reduced from 25 to 15c. and from 50 to 25c. Also splendid line white half hose

If you need a shirt of any kind, see our stock before buying.

We have on hand a lot of Ladies' Silk Waist that cost us \$1.25 each, we are offering them at 75c. Many other articles at correspondingly low prices.

As we have said before we mean to make a clean sweep. It must go at some price. We want the room for other goods.

Beautiful Line of Druggets and Rugs from 50c to \$10.00.

When you need to do any shopping see

PAGELAND MERCANTILE CO.

List Of Candidates.

The candidates and the offices which they are seeking are as follows:

For United States Senate—Cole L. Blease, L. D. Jennings, W. P. Pollock, Ellison D. Smith. First District—E. J. Dennis and R. S. Whaley.

Second District—James F. Byrnes and R. M. Mixson.

Third District—Wyatt Aiken, F. H. Dominick, F. S. Evans and John A. Hortou.

Fourth District—T. C. Duncan, Joseph T. Johnson and S. J. Nicholls.

Fifth District—D. E. Finley and W. F. Stevenson

Sixth District—A. L. Hamer, J. E. Ellerbe and J. W. Ragsdale.

Seventh District—A. F. Lever,

For Governor—Lowndes J. Browning, Jno. G. Clinkscales, R. A. Cooper, Jno. T. Duncan, Wm. C. Irby, Jr., Richard I. Manning, Jno. B. A. Mullally, Jno. G. Richards, Chas. Carroll Simms, Chas. A. Smith and Mendel L. Smith.

For Lieutenant Governor—A. J. Bethea, Wm. M. Hamer, J. A. Hunter and B. Frank Kelly.

For Secretary of State—R. M. McCown.

For Comptroller General—A. W. Jones and J. A. Summersett.

For State Treasurer—S. T. Carter.

For Adjutant General—W. W. Moore and M. C. Willis.

For State Superintendent of Education—J. E. Swearingen.

For Attorney General—A. G. Brice and Thos. H. Peoples

For Commissioner of Agriculture, Commerce and Industries—E. J. Watson.

For Railroad Commissioner—James Canler, Geo. W. Fairley, C. D. Fortner, Frank W. Shealey, Jno. H. Wharton and W. I. Witherspoon.

For Solicitor, Twelfth Circuit—L. M. Gasque.

Hanna & Hunley
Attorneys
CHESTERFIELD, S. C.

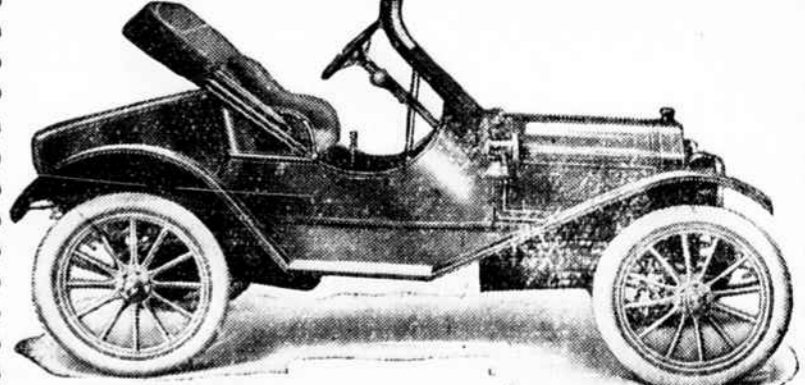
and the safest after all. No use in storing money in home chests or in out-of-the-way corners. If anything happened to you, the money would not be found. If fire happened to your house it would be consumed, if thieves broke in it would be assumed by them. The safest place is where you can always get it, yet always know that it is secure. Let us suggest you bank with us!



The Bank of Pageland

PAGELAND, S. C.

Metz "22" - \$475



THE PRACTICAL CAR, BUILT FOR REAL SERVICE.

At last a neat, powerful car may be bought at a low price. The Metz "22" is built for real service at the lowest possible cost. The weight is only 1,100 pounds, the motor is 22 1-2 horse power and it is an acknowledged hill climber.

It goes 28 to 32 miles on a gallon of gasoline. Do not buy until you see the Metz "22"

Fully equipped for \$475.

Pageland Motor Car Co.