

Tax Notice.

The books will be open for the collection of taxes from the 15th day of October 1913 to the 15th day of March 1914, with 1 per cent. penalty for January, 2 per cent. for February and 7 per cent. in March.

Tax levy for school	5 1-4 mills
Special school	1 mill
Constitutional school	3 mills
Ordinary Co.	3 1-2 mills
Past indebtedness	1 1-4 mills
Int. on R. R. bonds	1 1-2 mills
Road and bridges	2 mills
Total levy	17 1-2 mills
Special school levy:	
Cheraw bonds	1 3 4 3 mills
Marburg	8 "
Orange Hill	8 "
Pats Branch	4 "
Pee Dee	4 "
Stafford Mill bonds	2 1 4 4 "
Bethel	4 "
Center Point	4 "
Chesterfield bonds	3 9 "
Parker	4 "
Shiloh	7 "
Snow Hill	4 "
Ruby	8 "
Wamble Hill	3 "
White Oak	4 "
Center	9 "
Cross Roads	6 "
Elizabeth	3 "
Mt. Croghan bonds	4 8 "
New Hope	7 "
Wexford	2 "
Buffalo	2 "
Five Forks	2 "
Pageland bonds	6 6 "
Plains	2 "
Dudley	3 "
Friendship	3 "
Jefferson bonds	4 2 "
Long Branch	4 "
Green Hill	4 "
Middendorf	3 "
McBee bonds	4 1 2 8 "
Sandy Run	4 "
Union	8 "
Bay Spring	4 "
Bethesda	7 "
Bear Creek	4 "
Juniper	3 "
Patrick	6 "
Cat Pond	6 "
Lewis	5 "
Ousley	4 "
Palmetto	3 "
Wallace	5 "
Cheraw special road	2 "

Commutation Road tax is \$2.00 and must be paid by the 1st day of March 1914.

Will collect at following places:
 Pageland Thursday and Friday, Oct. 16th 17th, 1913.
 Jefferson Monday and Tuesday Oct. 20th-21st, 1913
 Catarrh Wednesday Oct. 22nd, 1913.
 McBee Friday Oct. 24th, 1913.
 John Wallace Tuesday Nov. 4th, 1913.
 Cashes Wednesday Nov. 5th, 1913.
 Cheraw Thursday and Friday Nov. 6th-7th, 1913.
 Middendorf Monday Nov. 10th, 1913.
 Cedar Creek Tuesday Nov. 11th, 1913.
 Cross Roads Friday Nov. 14th, 1913.
 Snow Hill Monday Nov. 17th, 1913.
 Odoms Mill Tuesday Nov. 18th, 1913.
 Plains Wednesday Nov. 19th, 1913.
 Dudley Thursday Nov. 20th, 1913.
 Ruby Friday Nov. 21st, 1913.
 Patrick Monday Nov. 24th, 1913.
 Mt. Croghan Tuesday Nov. 1913.
 W. A. Douglass
 County Treasurer.
 Sept., 15th, 1913.
 (Advertisement)

Meat Market

We have bought the market and will be at the same stand ready to serve you.
 Highest market price for cattle, hogs, chickens, eggs, etc. See us when you want to sell. Call us when you want to buy.

Brothers and

WILL ERADICATE CATTLE TICK

Southern Cattlemen Organize to Conduct Active Campaign for More and Better Live Stock in the South.

WILL IMPROVE THE BREEDS

Cattle Tick the Greatest Hindrance to Stock Growing in South—Post Costs Over \$100,000,000 Annually—Prominent Men at Convention Discuss Best Plans—Tick Must Go.

The Southern Cattlemen's association was organized at Montgomery, Ala., July 9, 1913. A hundred or more cattle growers and shippers, national and state live stock officials and representatives of the stock yards and railroad interests were present and took an active interest in the organization of the association.

The avowed object of the association are as follows:

1. The eradication of the cattle tick.
2. The development of a profitable cattle industry in the south.
3. The promotion of effective and uniform national and state live stock sanitary legislation.

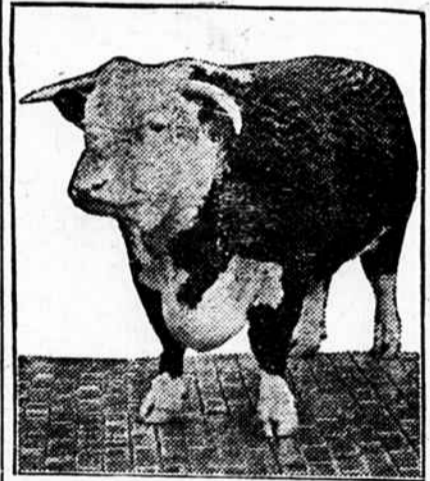
The means which have been suggested for the accomplishment of these objects are in part as follows:
 1. The holding of meetings for the discussion of live stock problems and the dissemination of live stock information.
 2. The organization of local or county associations which will promote the work of tick eradication and the improvement of the cattle of the locality by the introduction of pure bred bulls.
 3. By assisting the small live stock producer in marketing his products.

It has been suggested that an active field agent may be employed by the association to assist local cattlemen in the attainment of these purposes.

At Memphis, Tenn., on December 10th and 11th, 1913, the first regular meeting was held and a constitution and by-laws adopted fixing the annual membership dues at \$2.00 per annum. At that meeting a large number of cattlemen were in attendance from all the southern states, from Kentucky to Florida and from Virginia to New Mexico, and enthusiasm ran high. Every southern cattleman owes it as his duty to join this association, and bankers, professional men and merchants should afford to give it their assistance.

The initial work of the association will be directed toward the eradication of the cattle tick.

The work will be carried on in co-operation with the government, the Cattle Growers' associations of the



Point Comfort 14th—337488—Grand Champion International Live Stock Exposition, 1913, Owned by W. J. Davis, Jackson, Miss.

southern states, and many other organizations, together with prominent stock men and farmers of the south. Some of the things advocated at the convention are:

1. That the railroads put cheaper rates on breeding cattle.
2. That the government stop all interstate shipment of tick-infested cattle. This includes cattle on the way to market for immediate slaughter as well as animals being used for stocking purposes.

Resolutions were passed soliciting the co-operation of the oil mills of the south in building up the cattle industry and suggesting to the bankers of the south the importance of making cattle a basis of credit.

Professor Holden, director of Agricultural Extension Department of the International Harvester Company of New Jersey, addressed the convention. He considered the organization of the southern cattlemen the beginning of successful live stock growing on a large scale and the opening gun for the intelligent diversification of crops in the cotton belt. He was very enthusiastic in his remarks relative to the future of the south, and offered to assist the people in every way possible to carry out the objects of the association.

Officers elected are:
 D. S. Combs, Hickory Valley, Tenn., president.
 Dr. Tait Butler, Memphis, Tenn., secretary.

The vice-presidents are:
 Dr. C. A. Cary, Alabama; McQueen, Chaires, Florida; Dr. P. F. Johnson,

Georgia; W. R. Moorman, Kentucky; R. K. Roney, Louisiana; J. M. Maxwell, Mississippi; A. L. French, North Carolina; Z. T. Miller, Oklahoma; Dr. G. R. White, Tennessee; E. F. Tillman, Texas; S. D. Cross, South Carolina; H. C. Stewart, Virginia.

A committee was appointed to work with the railroads for the purpose of securing better transportation rates on pure bred cattle for breeding purposes.

An active campaign for members is contemplated, and sufficient funds will be raised to employ a field agent to assist in organizing county associations and in otherwise promoting the work. Dr. Tait Butler, progressive farmer, Memphis, Tenn., was appointed treasurer, and will receive contributions to assist in developing a greater cattle industry in the south. Every man in the south is expected to encourage and assist this organization in its great work, especially every cattleman and business man.

Representatives of the St. Louis packers offered to assist the organization in a substantial manner.



D. S. Combs, Hickory Valley, Tenn., President Southern Cattlemen's Association, Prominent Factor in Cattle Tick Fight.

GROW MORE CATTLE.

Prominent Cattle Grower Urges Southern Farmers to Raise Cattle—Conserve Soil Fertility, by Growing Grass and Feeding Cattle.

By A. L. FRENCH, Prominent Cattle Grower, Cascade, Va.

As our country grows older problems besides securing the rent dollar thrust themselves upon us. One of these is the soil. Thinking men of the south, conservation stands in a class by itself as our most pressing problem and practical means looking to this end demands from year to year an ever increasing proportion of our thought.

The crop that is indigenous to a country is not always the crop that continues to be held in the highest esteem by the leading thinking men of that section. For instance, in the finest blue grass section of Indiana I know a leading live stock raiser and feeder who is discarding blue grass very largely for timothy, herbs grass and sapling clover as pasture crops, because of the greater amount of feed the new pasture crops are producing. So while the grass has not been much in evidence upon the farms over much of the south up to this time the change of sentiment that is everywhere present among our people regarding the care of the soil leads us to believe that the matter will be tried out in a large way during the next ten years.

Grow More Grass. And where the trial is intelligently made grass will surely follow, for abundant rainfall, much sunshine, a fair quality of soil and lime makes grass growing. We have the rainfall and sunshine ever with us, the skeleton of a good soil is ours yet and a million or two tons of lime are within our borders awaiting our awakening.

CATTLE TICK MUST GO.

Special Agent in Charge of Tick Eradication Work in Mississippi, Alabama and Tennessee Discusses Plans—Urges Co-operation of All Organizations.

By DR. J. A. KIERNAN, Bureau of Animal Industry, Nashville, Tenn.

The further south we move the greater percentage of infested herds we find. The best method of tick eradication now is the arsenical solution in the dipping vat.

Today, in any territory in Tennessee, Alabama, or Mississippi, in which tick eradication is being prosecuted, the owners of cattle bring them to the nearest dipping vat on the appointed day, regularly every two weeks, and plunge them into the arsenical solution. After a few times he doesn't even need to prod them, to get them to go through, merely opens the gate, as they have experienced the benefits of the refreshing bath, and take to it with eagerness and apparent delight. The only thing to do is for the people of the south to get together and work in harmony, if they are to accomplish the best results.

Stamp Out the Tick. The U. S. Department of Agriculture, Washington, D. C., have a number of instructive bulletins giving the best methods of cattle tick eradication. Write for it now.

Notice to the Public

The Pageland Mercantile Company has been reorganized, but has its same working force with the exception of Mr. T. B. Watts. The new company will put forth every effort to serve its customers with the best goods at the lowest possible prices. If you have been a customer of the old company we invite you to be one with the new; and if you have never been a customer of ours, give us a trial. Won't you begin now?

We have on hand a lot of the old company's goods that we are going to dispose of regardless of cost. Such as suits in broken sizes. If we can fit you you can get the bargain of your life. Big lot of hats to go at wholesale prices. We expect to discontinue the implement line and can offer you some bargains in the stock on hand.

With best wishes to all we are yours for business,

PAGELAND MERCANTILE CO.

Auditor's Notice.

(Adjustment)
 The Auditor's office will be opened for the assessment of both Real Estate and Personal property from January 1st, 1914 to February 20th, 1914.
 All male citizens between the ages of 21 and 60 years are deemed Taxable Polls, except those who are maimed or for other causes are incapable of earning a support.
 The law requires 50 per cent. penalty added to taxes on property subject to taxes and not returned for assessment on or before the 20th of February, 1914.
 I will be in the Auditor's office January 1, 2, 3, 5, 10, 16, 17, 24, and 31; February 2, 7, 12, 14, 16, 17, 18, 19, and 20, and at the following places on the dates

named:
 Grant's Mill, January 6th, from 1 to 4 o'clock.
 Westfield Creek church, January 7, from 1 to 3 o'clock.
 Cross Roads, January 8, from 11 to 3 o'clock.
 Ruby, January 9, from 11 to 3 o'clock.
 Patrick, January 12, from 10 to 3 o'clock.
 Cedar Creek church, January 13 from 10 to 3 o'clock.
 John C Wallace's, January 14, from 11 to 3 o'clock.
 Cash's, January 15, from 11 to 2 o'clock.
 Angelus, January 19, from 11 to 3 o'clock.
 Jefferson, January 20 and 21.
 Catarrh, January 22, from 1 to 4 o'clock.
 Plains, January 23, from 9 to 12 o'clock.

Mt. Croghan, January 26, from 10 to 4 o'clock.
 Guess, January 27.
 Pageland, January 28 and 29.
 Dudley, January 30, from 10 to 12 o'clock.
 Middendorf, February 3, from 10 to 4 o'clock.
 McBee, February 4 and 5.
 Cheraw, February 9, 10 and 11.
 Odom's Mill, February 13, from 1 to 3 o'clock.
 T. W. EDDINS,
 County Auditor

Monuments

It will pay you to see me before placing an order for Monuments, Headstones, or anything in cemetery work. Material Workmanship guaranteed.
 John W. Quick, Pageland, S.

The Bank of Pageland

CAPITAL \$30,000.00 RESOURCES \$175,000.00

THE RECORD of The Bank of Pageland is a record of growth and Expansion.

THE AIM of The Bank of Pageland is to be of the greatest service to the greatest number of people.

AN ACCOUNT with The Bank of Pageland makes you one among that number--it means safety for your funds and accommodation when you need it.

THE RESOURCES of The Bank of Pageland are at the command of our customers, and we will be glad to number you among our customers.

ONE DOLLAR STARTS AN ACCOUNT.

C. G. MORGAN, Asst. Cashier. L. L. PARKER, Cashier.