

Anderson Intelligencer.

BY CLINKSCALES & LANGSTON.

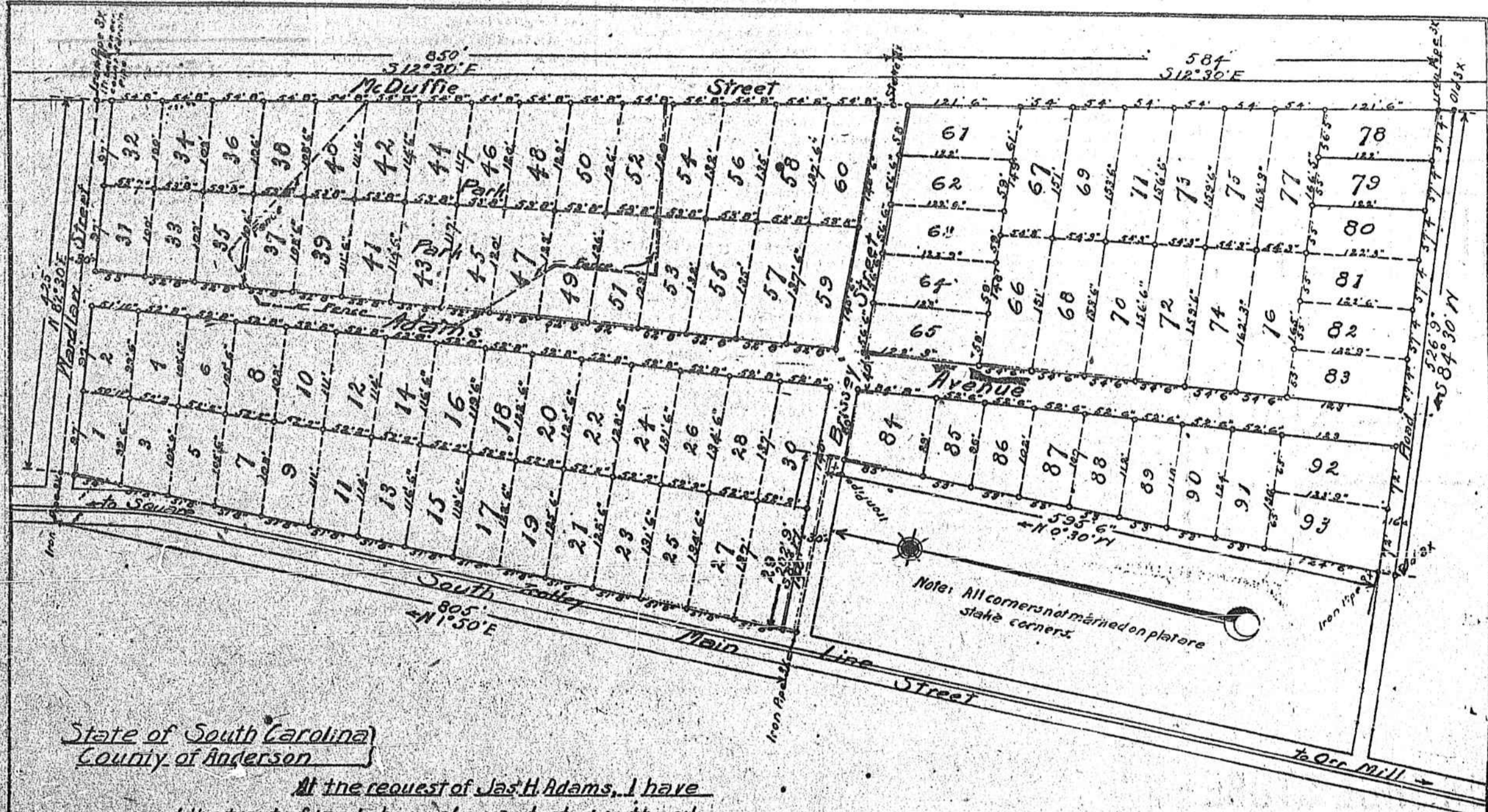
ANDERSON, S. C., WEDNESDAY, NOVEMBER 1, 1905.

VOLUME XLI--NO. 20.

87 EIGHTY-SEVEN BEAUTIFUL LOTS! 87

A. J. WEST & CO., of Atlanta, Ga., will sell for J. H. ADAMS, of Seneca, S. C., THE WARDLAW PROPERTY in the City of Anderson, S. C., consisting of 87 Beautiful Lots. Said sale will be by Auction on—

Monday, November 6th, immediately after Legal Sales.



State of South Carolina
County of Anderson

At the request of Jas. H. Adams, I have resurveyed the tract of land shown above, situated in the city of Anderson, S. C. and containing 15.91 Acres.

I also divided said tract into lots, each containing the fraction of an acre represented and having the dimensions shown above.

Resurveyed and divided
September 16 1905

P. C. Hughes
Land Eng.

Scale 1"=100'

No.	Acres	Amount	No.	Acres	Amount	No.	Acres	Amount	No.	Acres	Amount
1	.113	=	23	.152	=	45	.163	=	67	.186	=
2	.115	=	24	.155	=	46	.165	=	68	.186	=
3	.120	=	25	.155	=	47	.165	=	69	.186	=
4	.122	=	26	.159	=	48	.150	=	70	.186	=
5	.123	=	27	.159	=	49	.151	=	71	.192	=
6	.126	=	28	.162	=	50	.153	=	72	.192	=
7	.126	=	29	.162	=	51	.153	=	73	.192	=
8	.130	=	30	.165	=	52	.154	=	74	.194	=
9	.130	=	31	.161	=	53	.154	=	75	.200	=
10	.133	=	32	.164	=	54	.160	=	76	.200	=
11	.133	=	33	.164	=	55	.160	=	77	.202	=
12	.137	=	34	.169	=	56	.163	=	78	.193	=
13	.137	=	35	.168	=	57	.163	=	79	.195	=
14	.140	=	36	.169	=	58	.162	=	80	.197	=
15	.142	=	37	.169	=	59	.164	=	81	.199	=
16	.143	=	38	.171	=	60	.169	=	82	.190	=
17	.143	=	39	.171	=	61	.164	=	83	.190	=
18	.145	=	40	.174	=	62	.159	=	84	.165	=
19	.145	=	41	.174	=	63	.159	=	85	.112	=
20	.148	=	42	.170	=	64	.162	=	86	.119	=
21	.148	=	43	.160	=	65	.162	=	87	.126	=
22	.152	=	44	.143	=	66	.192	=	88	.131	=
23	.155	=	45	.140	=	67	.152	=	89	.121	=
24	.155	=	46	.140	=	68	.152	=	90	.126	=
25	.155	=	47	.140	=	69	.152	=	91	.126	=
26	.155	=	48	.140	=	70	.152	=	92	.126	=
27	.155	=	49	.140	=	71	.152	=	93	.126	=
28	.155	=	50	.140	=	72	.152	=			
29	.155	=	51	.140	=	73	.152	=			
30	.155	=	52	.140	=	74	.152	=			
31	.155	=	53	.140	=	75	.152	=			
32	.155	=	54	.140	=	76	.152	=			
33	.155	=	55	.140	=	77	.152	=			
34	.155	=	56	.140	=	78	.152	=			
35	.155	=	57	.140	=	79	.152	=			
36	.155	=	58	.140	=	80	.152	=			
37	.155	=	59	.140	=	81	.152	=			
38	.155	=	60	.140	=	82	.152	=			
39	.155	=	61	.140	=	83	.152	=			
40	.155	=	62	.140	=			=			
41	.155	=	63	.140	=			=			
42	.155	=	64	.140	=			=			
43	.155	=	65	.140	=			=			
44	.155	=	66	.140	=			=			
45	.155	=	67	.140	=			=			
46	.155	=	68	.140	=			=			
47	.155	=	69	.140	=			=			
48	.155	=	70	.140	=			=			
49	.155	=	71	.140	=			=			
50	.155	=	72	.140	=			=			
51	.155	=	73	.140	=			=			
52	.155	=	74	.140	=			=			
53	.155	=	75	.140	=			=			
54	.155	=	76	.140	=			=			
55	.155	=	77	.140	=			=			
56	.155	=	78	.140	=			=			
57	.155	=	79	.140	=			=			
58	.155	=	80	.140	=			=			
59	.155	=	81	.140	=			=			
60	.155	=	82	.140	=			=			
61	.155	=	83	.140	=			=			
62	.155	=			=			=			
63	.155	=			=			=			
64	.155	=			=			=			
65	.155	=			=			=			
66	.155	=			=			=			
67	.155	=			=			=			
68	.155	=			=			=			
69	.155	=			=			=			
70	.155	=			=			=			
71	.155	=			=			=			
72	.155	=			=			=			
73	.155	=			=			=			
74	.155	=			=			=			
75	.155	=			=			=			
76	.155	=			=			=			
77	.155	=			=			=			
78	.155	=			=			=			
79	.155	=			=			=			
80	.155	=			=			=			
81	.155	=			=			=			
82	.155	=			=			=			
83	.155	=			=			=			

The accompanying plat shows the sub-divisions of said property. These Lots are located in one of the most desirable and rapidly growing sections of the thrifty and prosperous City of Anderson, S. C. Its location is one of the proudest in this part of the State—close in, surrounded by new residences, business houses and other industries. Approached by electric cars, lovely driveways. It has a large frontage on South Main street, where the electric cars pass every few minutes; and extends to and fronts 1,500 feet on McDuffie street, one of the most desirable and fashionable residence streets in the city. Streets have been cut through and across this tract, making the 87 lots front on desirable and beautiful streets. The City of Anderson is known through the South as one of the most prosperous and rapidly growing cities in the country. Its large cotton receipts, banking facilities, manufacturing plants, money-making merchants, public schools, churches, splendid citizenship, its railroad facilities, good water, high, healthy location, all stamp it as an ideal residential city. The long line of wagons seen on the streets daily, laden with the fleecy staple, indexes the fertility of the surrounding country. It is the duty of every man, especially every young man, to take advantage of such opportunities as will present themselves at this sale, and secure a lot that will enhance rapidly in value and quickly add to live assets. The South's time has arrived, and she stands to-day proudly erect, with the flush of prosperity on her cheeks and the light of fortune in her eyes for all who have the manly nerve to take hold. In these times of frozied finance, dissensions in big life insurance companies, the collapse of building and loan associations, and pipe-line companies being absorbed by hot air, Real Estate, at least, is the bed-rock of safety. Nothing short of an earthquake can take it away from you, and it is something that you can sell and convert into cash and handle yourself without consulting any majority stockholders or board of directors. You cannot make a mistake in making purchases in this tract and in this growing city. Don't fail to be on hand—

MONDAY, NOVEMBER 6, 2 P. M.

You will find all your neighbors and many strangers who wish to become your neighbors. **TITLE PERFECT.**

TERMS—One-third Cash. Balance one and two years, with 7 per cent interest, or all cash, as you wish.

A. J. WEST & CO., Auctioneers for J. H. ADAMS.

The titles to these lots have been passed on as perfect by several of the best Attorneys in Anderson.—J. H. ADAMS.