

# Variety Of Highly Skilled Services



**THESE ARE OUR NEW ASSIGNMENTS**—Lawrence Gross, left, and Brian Shealy, right, review their job assignments with Assistant Lydia Plant Engineer Mike Kinard.



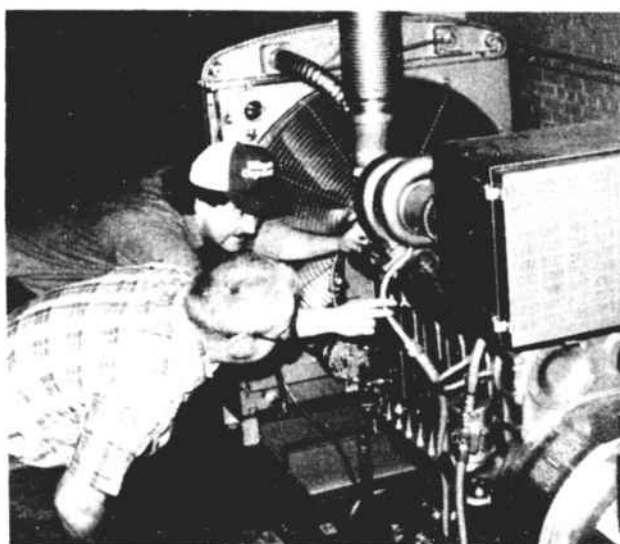
**LASER BEAMS USED TO LINE AND LEVEL WEAVING MACHINES**—Mechanical Engineer, Harry Sullivan, utilizes a Laserlevel to lay off floor at Bailey for new Sulzer Weaving Machines.



**ASSISTING WITH LASER**—Project Engineer Frankie Harmon assists Harry Sullivan in laying out room for new weaving machines.



**CHECKING NEW AIR COMPRESSOR**—Frankie Harmon and Harry Sullivan review the installation of a new air compressor at Bailey to be certain it meets the specifications for which it was designed.



**TAKING A CLOSER LOOK**—Sammy Lanford, left, and D. C. Whitman, right, take a close look at the new emergency lighting generator that has recently been installed in Plant 1 and 2 to provide temporary lighting in the plants when there are power outages.



**ADEQUATE FIRE PROTECTION**—Fire suppression is an absolute must with the new equipment that is being installed in the plants. Lydia Plant Engineer Bryan Coleman, Jim Barton, Dicky Patterson and Ricky Page carefully study the operations of the programmable controls used in plant fire protection systems.



**MINOR REVISIONS IN MACHINERY LAYOUT**—Harry Sullivan carefully makes revisions in machinery layouts for Bailey Plant.



**STATUS OF WORK IN PROCESS**—Director of Plant Engineering Silas Campbell checks with Danny Webb, Carl Heaton and Billy Osborne regarding work in process.

Bailey  
staff  
Bailey  
ineer-

mer Paul Fallaw, left,  
n Engineering functions