

The Clinton No. 1 plant appears like this to the outgoing second shift and to the oncoming third shift.



This is the Clinton No. 2 plant as it appears at midnight.

Life At The Clinton Plant . . . *While Others Sleep*



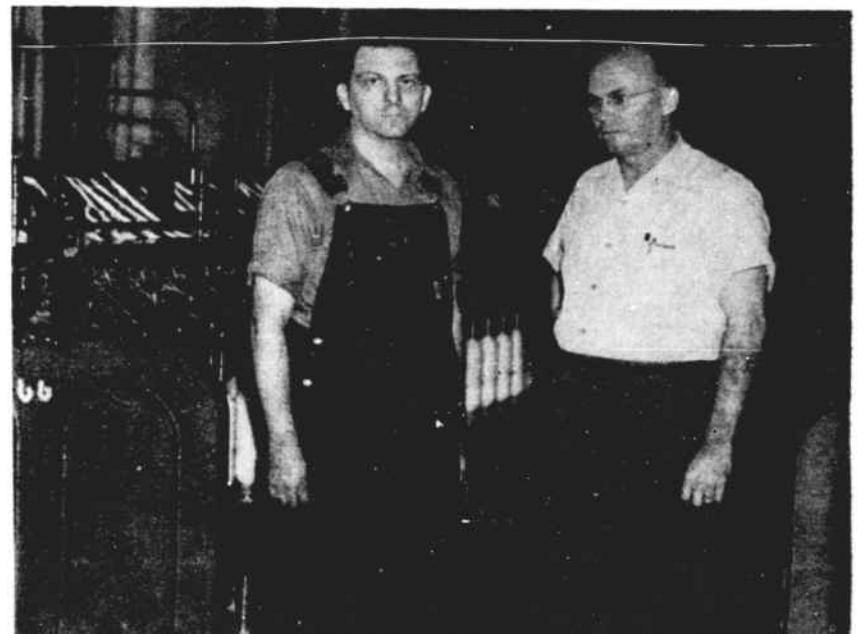
This is Clinton's third shift shop crew who keep things running through the wee small hours of the morning. Fred Shelton, left, is a machinist, and D. C. Whitman, right, is an electrician.

We see and hear much about the first shift at Clinton-Lydia Mills, and quite a bit about the second shift, but often we might be accused of somewhat neglecting the third shift. Perhaps that is because more of us are up and working during daylight hours. The third shift is just as important as any other, however, to the overall operation of the mills, and for that reason we are saluting a few typical employees of the third shift at Clinton. During this month, our photographer will make some trips through Lydia on the third shift so that the next issue will give you a few night views there.

We have good reason to be proud of our third shifts from many standpoints. Many people would assume that despite the same amount of sleep during the daytime, a person might not be as alert working on the third shift.

Records show this is not the case, because our third shifts have a very good safety record and there is hardly a pin-point difference in efficiency and production between all three shifts. There is a fine spirit of morale on the third shift which is composed of some mighty fine people from the youngest learner up through veteran employees with long service, and there are many of these.

We are proud to give this little extra recognition to the third shift and only regret that space did not permit the use of more pictures of more employees.



This snapshot in the Clinton card room on the third shift shows Dan Dunaway, left, with Second Hand J. R. Hamrick on the right. Good lighting helps keep production and efficiency high.



Our midnight photographer caught Elizabeth Holder, left, busy at work on the third shift. Elizabeth is a spinner and helps keep this department running at maximum production while many are asleep.



Odell Lambert, right, was busy at work doffing when our photographer came around on the third shift at Clinton. He's plenty fast, too, as his blurred hands show even through the picture was taken faster than a hundredth of a second.

Dorothy English, right, is a popular member of Clinton's third shift. Dorothy works as a battery filler and certainly looks wide awake for the late hour.



Our night photographer snapped Isabell Hamrick, above, who is a veteran weaver on the third shift at Clinton. Mrs. Hamrick is one of the most popular employees in the weaving room.



On the left you see Flornie McWalters busy at work as a third shift spooler. This department also maintains maximum efficiency on the third shift.