

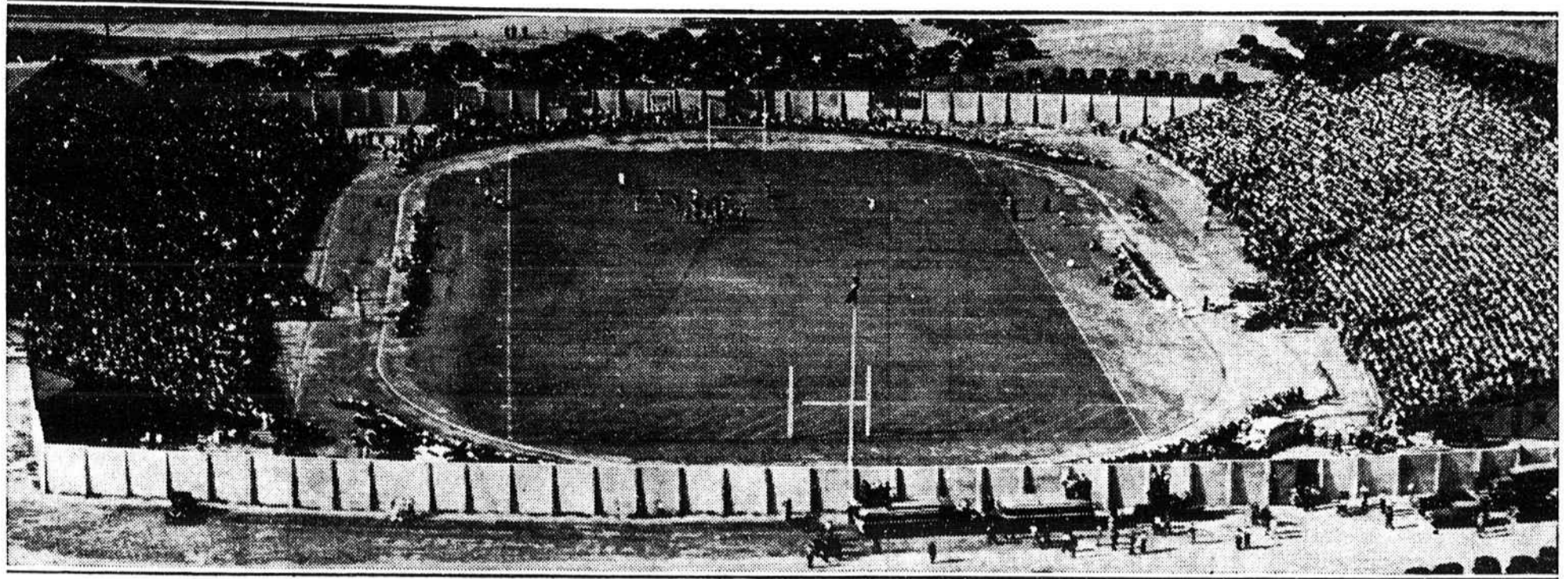
Fair Menu: Bird Or Tiger

Sorry, No Tickets



WILLIAM H. HARTH
DIRECTOR OF ATHLETICS
Pictured here is William H. Harth, athletic director of Carolina, who announces the greatest ticket sale in history. Director Harth in his third year of service has arranged for the Gamecocks one of the hardest grid schedules of any Southern college.

C
A
R
O
L
I
N
A



In 1936, a crowd exceeding 19,000, saw the Carolina-Clemson classic, constituting the largest group ever to see a sporting event in South Carolina. This year, the pre-game ticket sale has been ahead of the 1936 banner year and 20,000 fans will probably pack the Carolina stadium this afternoon to watch a battle of gridiron machines.

C
L
E
M
S
O
N

THE 1936 PANORAMA OF CAROLINA-CLEMSON CLASSIC

Week-In Streamer Lines

Gamecocks Face Tigers in Carolina Stadium This Afternoon at 2 O'clock in Thirty-Fifth Meeting of State Institutions.

Largest Blue Key Directory Ever Published at University Issued Monday Under the Editorship of Atherton Whaley.

Dinky Williams and Andy Jones Return From Newspaper Editors' Convention in Chicago to Put Out Clemson Edition of **The Gamecock**.

Students Stage Biggest Demonstration of Year in Clemson Pep Meeting; Tiger Burned Amid Cheers From Carolinians.

(Continued on Page Seven)

Up-State "Clyde Beattys"



Left to right on back row are Jess Neely, head coach; Frank Howard, line coach; Joe Davis, end coach; Covington McMillan, backfield coach; and in foreground, Bob Jones and Bill Dillard, freshman coaches.

Editorial-Of-The-Week

Approximately 20,000 fans will see the University of South Carolina Gamecocks and the Clemson Tigers clash this afternoon in the Carolina stadium.

For thirty-five years, these two state schools have been meeting on the gridiron, the tilt being the shining feature of the South Carolina sports calendar yearly.

The 1937 program is scheduled to draw its curtain at 2 o'clock. From the opening whistle until the last car speeds around the six lane stadium highway homeward, confusion and spirit will reign. It is the Carolina-Clemson game, steeped in tradition, resplendent in color, unexcelled in spirit.

Two highly-touted elevens will run on the field today, their uniforms offering a panorama of color against filled, cheering stands, the green turf and the ceremonies surrounding the encounter. As to who shall be the victor, nothing but guess work is in order. The teams by comparative scores are of equal strength. The spirit of both squads is at a peak. Both are in top condition for this, **THE** game of the

(Continued on Page Four)

The GAMECOCK

University of South Carolina

Largest Circulation of any Collegiate Newspaper in South Carolina History

Volume XXXI, No. 5

COLUMBIA, SOUTH CAROLINA, THURSDAY, OCTOBER 21, 1937

Founded 1908

Notable Men Will Attend Clemson Tilt

President's Box Filled With Leading Men Of The State

Senator Byrnes Comes Legislators and Congressmen Turn Out En Masse For Grid Classic

More than 200 outstanding men in political and educational circles in South Carolina will be the guests of Pres. J. Rion McKissick at the annual Carolina-Clemson gridiron classic in the University stadium today.

Governor Olin D. Johnston, a former student at the University, will sit on the Carolina side of the field during the first half of the game, and will then move over to the Clemson side for the last part of the game.

In the President's box with him will be United States senators, congressmen, mayors of some of the largest cities in the state, as well as around 25 state senators.

(Continued on Page Six)

Faculty Bans Dances Given By Frat Group

Interfraternity Council Loses Control Of Dances

The faculty committee on fraternities has requested the Interfraternity Council to revise its constitution so that its duties shall become solely those of regulating the various fraternities on the University campus, according to an announcement by William H. Harth, director of student activities.

Such a change will mean that the Council will no longer function as a social organization as it has in the past, promoting dances and other interfraternity social activities.

In order to alleviate the situation which has developed between what is known as the "Big Seven" and the "Little Six" the faculty committee has also requested that the officers of the Council rotate among the several frats, so that all chapters will secure equal standing.

This last step in the regulation of all fraternities by the faculty follows the ruling made that semester that all frats move on the campus and be housed in the dormitories.

News-Reel

"IT'S OUR DAY"



CAPT. JACK LYON BACK

"WE'LL WIN"



BILL WILES, Clemson Back

Thirty-Fifth Classic In Stadium At 2:00

Through the turnstiles at Carolina Stadium today will pass a record crowd to witness the gridiron battle between the South Carolina Gamecocks and the Clemson Tigers, who meet for the thirty-fifth time in their traditional series. The kickoff is scheduled for 2 P. M.

Rated for the first time in years as an even-money game, it promises to be the key game in the settling of state championship arguments, since the defeat of Furman by the Citadel Bulldogs last Saturday. Certainly no other contest of the season will have the color of the State Fair classic.

The Stadium will be a colorful spectacle for this "Big Thursday" of the State Fair. The gray-blue of the Cadets' phalanx will face the variegated color scheme offered by the co-eds of the University. Topping off the affair will be the new flags placed on the upper tier, honoring the different schools of the state and Southern conference.

Special Boxes Erected

Leaders of the state of South Carolina will be present to cheer for one of the state's two largest educational institutions. Special boxes have been erected in front of each stand. That on the Clemson side of the field will be presided over by Dr. E. W. Sikes, president of Clemson College. Dr. J. Rion McKissick, president of the University, will be in charge of the box in front of the Carolina stand. Governor Olin D. Johnston, as is the custom, will sit with each group for half the game.

The Garnet and White clad Gamecocks will be making another bid for the Clemson scalp, which has not been brought home to their roost since Don McCallister assumed the position of head coach. Jess Neely's Tiger eleven will be attempting to capture their fourth consecutive win in as many years at the expense of the Birds.

Forty-one years ago, 1896, the two teams played the first game of the series that has continued until the present, except for a six year lapse due to the too intense rivalry between the camps. Of the 34 games, Clemson has won 22, the University 11, and one resulted in a scoreless tie.

Clemson's Record

Clemson so far this season has shown plenty of power in the field but has since the first game lacked the final scoring punch so necessary to a winning team. After smothering P. C., the Bengals dropped close games in succession to Tulane, Army, and Georgia.

The Gamecocks have victories over Emory & Henry and Davidson to their credit, as well as a deadlock with North Carolina and losses to Georgia and Alabama.

With the exception of Captain Harold Lewis, who suffered a broken leg in practice, the Tigers are expected to have their entire strength available for the contest. All the Gamecocks except Kelly, Urbanyi, and Tobias will be ready for the opening whistle.

The freshman elevens of the two schools will clash Wednesday night on Melton Field in an evenly matched appetizer to the varsity meeting the following day.

(Continued on Page Six)