

By MARK DANIELS
(General Superintendent and Landscape Engineer of National Parks.)

CRATER LAKE National park has been termed by many the eighth wonder of the world. Nestling in the heart of a great mountain which, in ages past, was a living volcano, 6,000 feet above the sea, with its sapphire surface unruined, reflecting the many-hued surfaces of the 1,000 feet high crater walls which surrounded it, it is undoubtedly one of the most exquisite gems of color to be found in the world. Its blue surpasses the blue of the Bay of Naples in richness and intensity and its somewhat weird surroundings, pregnant with mystery and solitude, are in perfect harmony with the placid repose of its surface.

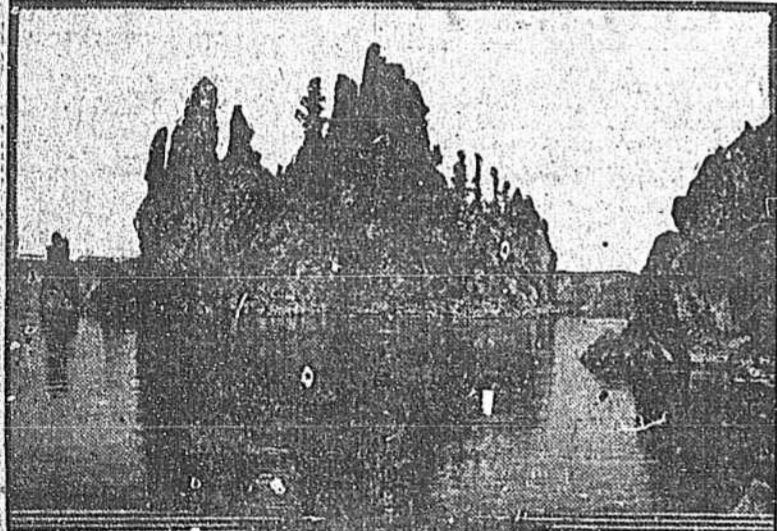
There are glaciers in many countries, high peaks, waterfalls, cascades, forests and fields of wild flowers to be found in many lands, but there is only one Crater lake. Individuality is as difficult of attainment in scenery as it is in persons, and in Crater Lake National park one finds it to an extreme degree.

The people of the United States are particularly fortunate in the possession of their national parks in that almost every one of them has a marked and striking individuality and contains within its boundaries some features which will leave a lasting impression and will be a source of joy and pleasure when other things are forgotten; but of all the sights that can be had in the scenic reservations of our country, perhaps none will strike the observer with such force

which, at this latitude is covered with snows for many months of the year; it is however, the most practicable place at which to locate the government headquarters and to establish a small village consisting of a few stores and supply stations. It is not, however, at the rim of the crater and therefore could never, under any circumstances, be a place where tourists would be content to stay, for there is ever the mountain top with the lake beyond beckoning the traveler to the goal of his pilgrimage.

The establishment of the village on the rim of the crater overlooking the lake would be ideal, but in certain seasons the snows are so late in melting that tourists might never reach the village in the season of their travel. The solution, therefore, appears to be a double village or two stations, one at the lower level, which opens several weeks before the upper levels, and one at the rim of the crater. By this means tourists may arrive at the lower station, where accommodations may be found, and proceed to the rim of the crater by foot when the road is not passable for vehicular traffic. At the rim of the crater should be established a secondary village in which sleeping and eating accommodations are provided, together with stores and studios which might supply the wants of the tourists.

Sailing and Fishing on the Lake.
The desire of the tourist upon arriving at Crater Lake National park is to reach the rim of the crater at the earliest time. Once there, his all-consuming desire is to descend to the surface of the lake and to sail upon



THE PHANTOM SHIP, CRATER LAKE

and will leave as lasting an impression as Crater lake.

Crater Lake National park is in the Cascade range of mountains in southern Oregon. The lake is circular in form and about six miles in diameter. Its surface is at an elevation of 6,177 feet above sea level and is an average of 1,000 feet below the crest of the surrounding crater rim. The great cavity in this mountain was once the crater of an active volcano which, at one time or another, collapsed, leaving a receptacle several hundred feet in depth which is now filled with sparkling blue water, clear as a diamond and of a blue that defies description.

Arranging for Tourists.
To make this unique gem of exquisite beauty available to the traveling public has been no simple problem. The park is traversed by roads from the west and from the south and the approaches are along easy gradients and through wonderful forests and alongside beautiful canyons, but upon a closer approach to the ascent to the rim of the crater, the difficulty of reaching the lake becomes more and more serious, and the problems involved in establishing proper accommodations for the tourists and maintaining them throughout the season becomes more and more complex.

The superintendent's house is located several miles from the rim of the crater and at an elevation of 6,000 feet above sea level. This altitude, while more than 1,000 feet below the rim of the crater from which a view of the lake can be had, is still one

this bluest sea about the phantom island and in the shadow of the jagged rim. After he goes this far, his next consuming desire will be to hook the glorious trout which may be seen swimming in the depths beneath his boat. A trip of this sort will only fill him with a further longing to encircle the lake on land around the rim, so that he may drink in the sparkling colors and deeper shadows from all angles. The problem, therefore, which confronts the secretary of the interior is the development of roads and trails about the lake so that the tourist may receive full satisfaction, and to do this, plans have been drawn and work begun on the roads and trails and village.

Congress has appropriated money, which is being expended through the war department, for the construction of an encircling road to be built around the crater. This road is under construction and a material portion of it has been completed. The three entrance roads, one from Medford on the west, one from Klamath Falls on the south, and one along Band creek on the east, have been completed and are now open to travel. The trail from the rim of the crater to the lake surface indicating the location of the proposed rim village has been constructed and will this year be widened and improved. A lodge or hotel has been constructed on the rim of the crater and roads connecting it with the superintendent's headquarters at Anna Spring at the lower level have been completed.



Christmas Store

of a Million Gifts



The preparations made by us this year for your convenience during the Xmas Shopping season is one of the best reasons we have for asking you to do your shopping here.

Another reason we have in making this request is the fact that our lines are much larger, more varied and at less money than many of our competitors from the mere fact that we anticipated the extreme advance on all goods. And we take stock immediately after Christmas, so we have already cut prices on lots and lots of winter goods, in order to move it out of the house NOW.

Big Clothing Values for Christmas

36 Men's all wool Strauss made Suits, worth \$10.00, to \$15.00, Special holiday price.....\$7.95

24 Men's Blue Serge Suits, other stores ask \$7.50, Special holiday price.....\$3.45

18 Men's suits pure all wool through and through other stores ask \$15.00 to \$20.00, Special holiday price.....\$5.28

3 dozen Men's all wool worsted pants in all colors and stripes, worth \$2.00 to \$3.50, Special holiday price.....\$1.98

28 pairs Men's all wool blue serge also brown striped trousers, worth from \$3.00 to \$5.00, Special holiday price.....\$2.98

36 dozen Men's Heavy Derby ribbed Shirts and Drawers, worth 50c, Special holiday price 38c each, 2 for.....75c

12 Men's Suits in pencil stripe and all wool Cassimeres, drummer's, no two alike, worth \$10.00 to \$15.00, Special holiday price \$7.98

15 Boys' All Wool Knickerbocker Suits, sizes 3 to 8, worth \$1.50, Special holiday price.....97c

24 dozen Men's extra heavy cotton flannel drawers, worth 50c, Special holiday price.....21c

24 Boys' all wool Norfolk Suits, big bargains at \$3.50, Special holiday price.....\$1.97

15 Boys' all wool Blue Serge Suits, sizes 10 to 18, the world over, \$5.00, Special holiday price.....\$3.97

19 Men's extra heavy Mackinaw Coats in all stripes and colors, others ask \$7.50, Special holiday price.....\$4.50

17 Boys' heavy Mackinaw Coats in all stripes and colors, others ask \$7.50, our Special holiday price.....\$4.89

17 Boys' heavy Mackinaw Coats, sizes 12 to 17, worth \$5.00, Special holiday price.....\$3.35

26 Boys' heavy Overcoats all sizes, worth up to \$5.00, Special holiday price.....\$1.65

Specials in Counterpanes

One lot Colored Counterpanes, extra size, worth \$2.50, Christmas sale price, each.....\$1.39

One lot White Counterpanes, extra size, worth \$2.00, Christmas sale price, each.....98c

One lot White Counterpanes, extra size, worth \$1.25, Christmas sale price, each.....85c

Linen and Table Damask for Christmas

500 yards all-linen Table Damask, 72 inches wide, worth 50c yard, Christmas sale price, yd 35c

500 yards all-linen Table Damask, 72 inches wide, worth \$1.00 yard, Christmas sale price, yd 48c

500 yards all-linen Table Damask, worth \$1.25 yard, 72 inches wide, Christmas sale price yd 69c

Specials for Monday

3,000 yards fine French Ginghams, worth 12-1-2c, all new, beautiful patterns, for this sale .81-3c

2,500 yards Brogan Jack and Jill, worth 12-1-2c for Special holiday price, yard.....9c

1,500 yards 30 inch heavy Cotton Flannel, worth 10c, Special holiday price, yard.....7c

Brussels rugs in beautiful patterns, 27x54 inches. Regular \$2.50 values, Special holiday price \$1.98

Wool skirts in beautiful patterns, made in the latest styles, from \$1.00 to.....\$5.98

Our Holiday Booth

For the convenience of our customers we have arranged a Special holiday or Christmas Booth in our dry goods department, where you will find a beautiful array of new and popular priced gifts. Be sure to see it.

Colla Mesh Bags 25c to 75c each.

Solid leather purses for children; 25c each.

All-Leather Novelty Hand Bags 50c to \$2.50 each.

Men's Ties, 15c, 25c, and 50c each.

1 pair Suspenders and pair of Hose Supporters in pretty holiday box, 50c.

Comb, Brush and Mirror Sets at 75c each.

Children's Fur Sets 98c to \$1.66 each.

Children's Handkerchiefs 2 for 5c.

Ladies' Handkerchiefs in holiday boxes, 3 for 25c.

Children's Caps 25c and 50c each.

Boudoir Caps 25c each.

Children's Gloves—assorted colors, 25c pair.

Scarfs 25c each.

Pretty Pin Waist sets 25c each.

Infant's Wool Socks 25c each.

Pillow Cards—all colors, 25c each.

Crepe de Chine Waists

Just received from our New York buyer an express shipment of beautiful Crepe de Chine Waists in every new style and color; regular \$3.50 values, Special holiday price.....\$1.98

One lot of Ladies' Rain Coats. Good ones, at \$1.98 to.....\$6.98

Ladies' Waists in Silk and fancy trimmed, \$1.00 values, Special holiday price.....48c

Ladies' beautiful Waists in all colors in Crepe de Chine, Special holiday price \$1.98

Ladies' Wool Sweaters in all styles and colors, all special prices from \$1.50 to \$3.50

Sport Coats

We have a big line of Sport Coats, made of Corduroy, Plaids, etc., made up in every new style at prices ranging from \$2.48 to.....\$7.50

Children's Coats

A big lot of Children's Coats, made up in all this season's styles and fabrics at Special holiday price 98c to.....\$2.98

Men's Hats

"Lesser's Specials" a beautiful soft hat in all this season's shapes and colors. A good value at regular price of \$2.50, Special holiday price.....\$1.50

Dresses! Dresses!

Ladies' Dainty House Dresses, made in colors, \$1.25 values, Special holiday price.....75c

Ladies' Serge Dresses, all newest styles, trimmed in plaid and plain Taffetas from \$6.00 to.....\$25.00

Ladies' Suits, Russian Blouse, Ford Box Coats, in all newest shades and materials, from \$6.00 to.....\$25.00

Big Holiday Special In Coat Suits

Thursday's express brought us, direct from our New York buyer, 28 of the greatest values in stylish new Coat Suits that we have shown this season—worth up to \$25.00, Special holiday price only,

\$9.98

Each
Newest materials and all fashionable shades.

BIG LINE OF DOLLS—ALL KINDS

75c to \$1.00 Each

THE LESSER CO.

Where You Pay Less



Principal Characters in "EVERYWOMAN" at Anderson Theatre, Wednesday, December 29