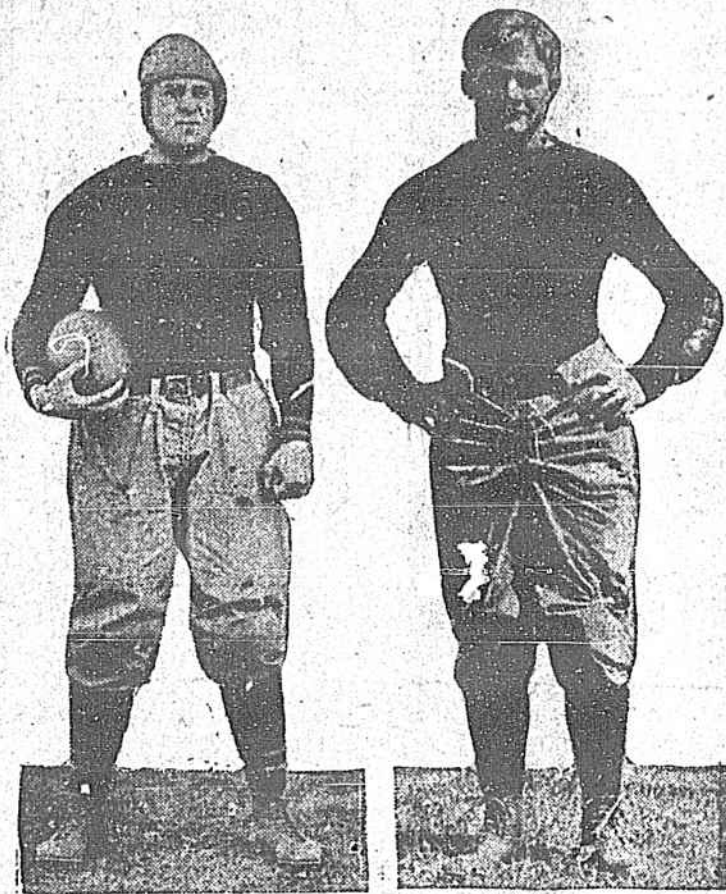


When the Army and Navy Clash.



Capt. Alex Weyand, Army. Capt. A. C. Miles, Navy. When the West Point and Annapolis football teams clash at the Polo Grounds, New York, Saturday, Nov. 27, the one and only really national football game of the season will be played. It is expected that every seat in the immense arena of the New York Giants will be occupied.

The greatest thing in modern feeding is MOLASSES. It cuts down the feed bill and builds up the stock.

**RED SHIRT HORSE AND MULE MOLASSES FEED**

It's something the horses and mules like—gives them an appetite—starts the saliva running and aids digestion. Far superior to an all grain feed. Give your horses and mules a treat, and at the same time save money.

Our RED SHIRT (first grade) Horse and Mule Molasses Feed contains Corn, Oats, Ground Alfalfa, made appetizing with salt and pure cane molasses, and analyzes as follows:

**Piedmont Horse & Mule Molasses Feed** Second Grade—Analyzes: Protein 12%; Carbohydrates 55%; Fat 2%; Fibre 15%.

**SWAMP FOX HORSE & MULE MOLASSES FEED** (3rd Grade) This analyzes: Protein 9%; Fat 2%; Fibre 15%; Carbohydrates 55%.

**PERFECTION HORSE & MULE FEED** (Dry Mixed) We manufacture also a dry mixed (no Molasses) Horse and Mule Feed, which analyzes: Protein 12%; Fat 3%; Fibre 12%; Carbohydrates 57%. This is composed of straight grain and ground Alfalfa Meal.

**RED SHIRT DAIRY FEED**

First Grade: A balanced ration containing Molasses. Cattle are very fond of it—keeps them in good condition. Increases the flow and enriches the quality of the milk at a reduced cost of feeding. Contains ground Corn, C. B. Meal, Wheat Middling, Ground Alfalfa, Pure Cane Molasses and Salt. Analyzes: Protein 15%; Fat 3%; Fibre 12%; Carbohydrates 60%.

**Piedmont Dairy Feed** Second Grade—Analyzes: Protein 12%; Fat 2%; Fibre 15%; Carbohydrates 55%.

**RED SHIRT HOG FEED** A combination of Digestive Tankage, Ground Corn, Rice screenings; very fattening. Keeps the hogs in good condition. We manufacture also RED SHIRT Scratch Feed and RED SHIRT Baby Chick Feed.

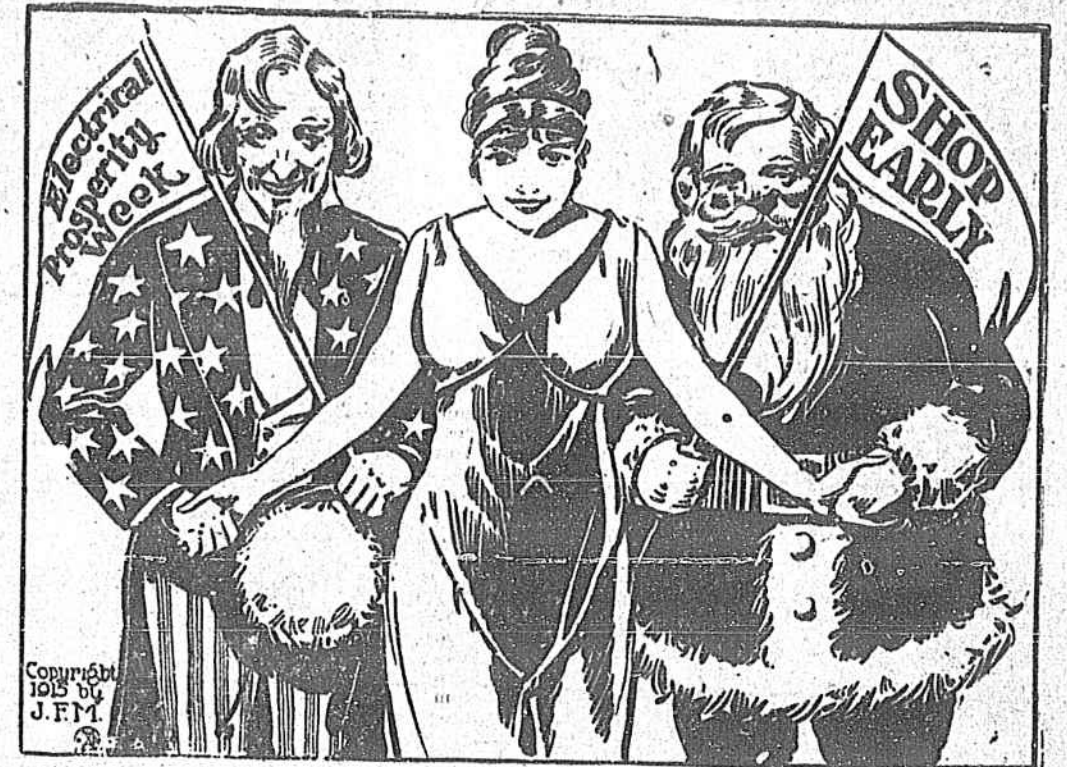
**SEVEN EGGS A WEEK HEN FEED** Composed of Ground, Corn, Ground Oats, Ground Wheat, Barley, Malt, Rice, Cottonseed Meal, Cow Peas, Meat Meal and Lard Meal. Analyzes: Protein 18%; Fat 4%; Fibre 12%; Carbohydrates 49%.

As shown on the bags in our ad, nearly all of our feed is made from Carolina products, even to the bags and twine. We are, therefore, in the market for Oats, Corn, Wheat, Alfalfa Hay and any other kind of Hay.

We also carry a full stock of GRAIN, HAY AND STRAW.

Our feeds as shown above are mixed on scientific principles to furnish the greatest nourishment at the lowest cost. Let us show you how to cut your feed bill down. Write us for prices, etc.

**Molony & Carter Co.**  
CHARLESTON, S. C.



NOVEMBER 29th to DECEMBER 4th  
Let Everybody Brighten Up, Light Up and Be Prosperous

All over this great land of ours, this coming week, the "Live ones" are observing Electric Prosperity Week. Get in the Band Wagon! Any dead minnow can float down stream, but it take a live fish to swim up-stream.

The new bust-line brings new figure lines!

What this new bust-line is, and how it greatly improves all types of figures is best demonstrated in

The New Model

**Molase**  
Fro La Say  
Front Laced Corsets

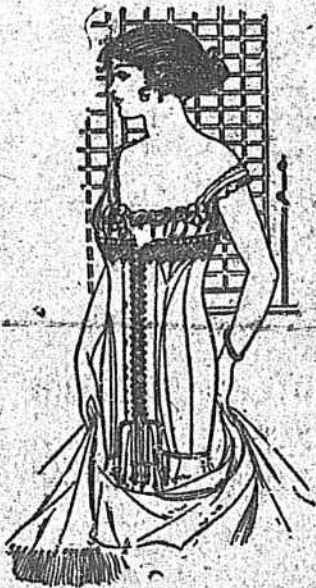
at \$2.50, \$3.50, \$5, \$6.50 and upwards

And at any of these prices, our expert Corsetieres will fit you personally—a service that insures the new figure-line in both STYLE and COMFORT!

This is the Corset store of real service!

**Mrs. B. Graves Boyd**

Exclusive Agent Frolaset Corsets and McCall Patterns



FRENCH SOLDIER FED BETTER THAN AT HOME

Living is Higher Than Standard of the French Common People.

Paris, Nov. 27.—As far as food goes, the French soldier lives well, if the ordinary program of the French common people is taken as a standard. His menu is based on two solid meals a day with a breakfast of bread and coffee. There is nothing the French soldier appreciates so much as his morning coffee. It is brought to him in canvas buckets, sugared but without milk, and like all French coffee it is excellent. If the weather is bad there is usually a shot of rum from the company rations to go with the coffee and bread.

For dinner, and supper the two great staple dishes are ragout and pot-au-feu. The ragout is made of stewed meat, preferably mutton, highly seasoned. The pot-au-feu is boiled beef and soup. The stew is generally thickened with dried beans or rice, but the pot-au-feu receives as many varieties of vegetables as ingenious foraging can muster, with always a plentiful basin of potatoes.

Occasionally the French cooks even close to the firing line vary the menu with special dishes such as steaks, brains, hearts and the like, which they carry out to the men in the trenches. It is a curious remark in France that the cook is the bravest man in the regiment, and this is generally a tribute to the danger that he sometimes has to undergo to carry his dainties to the appreciative Pottus who await his coming at the very apex of the battle line.

The meat in its raw state is brought up on the hoof to a point as near the lines as is conveniently safe, and there slaughtered. Typical French economy is shown in this operation, for use is made of every possible fragment of the carcass. The hides, bones, and uneatable portions are carefully collected and sent back to the base to be otherwise turned to advantage.

The cook of each mess sends his assistant each morning for the squad's share of the butcher's stores, and the assistant receives promptly great pieces of beef or mutton corresponding to the number of men to be fed.

The operation of carving the meat is generally a matter of great interest to soldiers who happen to be off duty. They gather in the vicinity of the cook's tent or hut and admire or criticize the skill with which he undertakes the operation. Although some of the best cuts are often used in the pot, there is an opportunity for the exercise of considerable skill in trimming off an occasional supply of steaks or chops for treatment in some other manner.

The meat dishes by no means complete the soldier's dinner. There is the bread—and French bread is proverbially excellent. It is baked in loaves like a small mill-cake, and before being served the crust is carefully cut away, because in transportation and handling a certain amount of dirt is bound to gather there. The loaf is rather more solid than that of the French bread served in American restaurants or in Paris.

Each man is allowed a half pint of red wine with each meal, and the individual may provide himself with such luxuries as salad, cheese or fruit. Salad may often be obtained locally, and not infrequently the men have their own little beds of their favorite green, grown in some favorable spot close to their position.

INTEREST IN ORIGIN OF JAPANESE PEOPLE

Chicago Professor to Resume His Studies of Anthropology of Nippon.

Tokio, Nov. 27.—One of the outgrowths of the coronation of the Japanese people and in that connection the arrival here of Dr. Frederick Starr of the University of Chicago, to resume his studies of the anthropology of Japan is receiving much attention. Dr. Starr is regarded as a foremost authority on the anthropology of Japan and Korea and he will spend four months in these countries in research work along anthropological and ethnological lines. He is especially well informed in regard to the Ainu, the Japanese aborigines.

While in Japan Dr. Starr will live the life of a Japanese. He contemplates paying particular attention to photographic work in an effort to round out his already large series of pictures illustrating the life and culture of the island empire.

He will continue his study of the Buddhist sects and will visit the most important Shinto shrines that he has not seen; he hopes also to complete his investigations of Japanese symbolism, upon which he has been engaged several years. In Korea he plans to make visits to the more famous Buddhist temples and monasteries which abound in interesting and almost unknown works of art. He wishes, also, to gather material for a "Manual of Korean Ethology" and to make the beginnings of an ethnological collection along lines which he has long had in mind. He will continue to gather Korean riddles and proverbs, of which he has already a considerable collection.

Finally Dr. Starr desires to study further the administrative work of the Japanese in Korea, a work which he has watched with interest ever since Japan annexed that land.

"Among other things," he said, "I shall make a pilgrimage on foot from Tokio along the famous Tokaido highway, stopping as often as possible at the old stations and inns."

Dr. Starr has made investigation tours in the Congo Free state, Mexico, and the Philippine Islands and is an authority on Liberia.

RECIPES

- Invald Cookery.
- Dietaries are frequently classified as follows:
1. Liquid diet, including broths, meat extracts, milk gruel, egg-cream soups, beverages, etc.
  2. Soft diet, including eggs, soft cooked eggs, milk and cream toast, custards, junkets, jellies, etc.
  3. Light diet, including eggs, sweetbreads, chickens, squabs, quail, tenderloin steak, scraped beef, bacon, baked potatoes, asparagus, peas, corn starches and jelatine desserts, sponge cake, baked apples, oranges and other fresh fruits, excepting berries with small seeds.
  4. Full convalescent, including soups, meats, except fresh pork and veal vegetables, except cabbage, mushrooms and green corn; fruits, fish, eggs, desserts, except pastry and rich cakes.
- A special diet is frequently ordered by the physician for an individual case, regardless of the above classifications. Milk is of great value in invalid cookery. It contains the five food principles, and agrees with most people. It may be given in nearly all cases of illness.

- Two quarts a day must be allowed, if no other nourishment is given.
- Composition of cows milk: Water .87; sugar .05; mineral matter .70; proteid .03.3; fat 4.0.
- Milk Punch.**
- One-half tablespoonful sugar, two to three cups of milk, few grains salt, one tablespoonful rum, brandy or whiskey. Put ingredients in clean jar and shake until frothy. Strain in a glass jar for serving.
- Egg Nogg.**
- One egg, milk, three-fourths tablespoonful of sugar, few grains of salt, one egg white, one and one-half tablespoonfuls of cherry or one tablespoonful of brandy or rum, two to three cups of cold milk, beat the egg yolk, add sugar, salt and slowly the liquor, then add gradually the milk, strain and add egg white beaten stiff, serve in a glass.
- Beef Broth.**
- One pound of lean beef, one quart of water; cut meat in one-half inch cubes, place in saucepan and add cold water, allowing it to stand 45 minutes; simmer for two hours, strain and when cold remove fat. When wanted for use reheat and season with salt and serve.
- Beef Extract.**
- Grind beef through meat chopper, put it into clear glass jar, screw down the top and set the glass in cold water on a rack. Bring it to the simmering point and simmer for two hours, squeeze the juice through a potato ricer, reheat and serve.
- Corn Meal Gruel.**
- One tablespoonful of fine corn meal, one-half tablespoonful of flour and one-fourth teaspoonful of salt, three tablespoonfuls of cold water, two cups of boiling water, milk or cream. Mix meal flour and salt. Add cold water making paste. Add gradually to boiling water, stirring constantly. Let boil one hour. Strain, bring again to the boiling point and add milk to suit taste. Serve hot.
- Egg in a Nest.**
- One egg, few grains of salt and one slice of toast. Separate the white from the yolk, beat stiff and add salt. Pile on a piece of toast in boiling salt water. Make a depression in the center of the white and drop in the yolk. Bake in a moderate oven until it is delicate brown.
- Junket.**
- One quart of milk, one teaspoon of vanilla, one tablespoon of cold water, one junket tablet and three table-spoons of cold water. Heat the milk to luke warm. Add sugar and flavor. Add the tablet, stir in quickly and pour at once in to the dishes in which it is to be served. Let stand in a warm place without shaking until firm. Serve.

FARM FOR RENT

We have a splendid two horse farm for rent five miles from the city. See us.

Anderson Real Estate & Investment Co.  
E. H. Horton, Pres. L. S. Horton, V. P. W. F. Marshall, Secy.

Here's a "new one" on the FORD

but not a joke. A complete painting outfit containing everything for painting your Ford or any car of similar size—quality the best.

The Job is easily done—simple and inexpensive.

Only a few hours work and three days for the paint to dry. Follow directions given on each can and your car is again ready for the road. It will be a dividend-paying investment for you to

**Repaint Your Car**

You get an extra year of service or if you want to sell or trade your car, repainting increases its selling value 15 to 20 times the cost of painting.

Don't let rust eat up your car—paint it now—it only takes

**Three Days—Three Cans—Three Dollars**

**Pee Gee Auto Painting Outfit**

**\$3.00** Contains everything for refinishing your Car including Top.  
Full directions on each can.

Scientific Advertising.

Victor Moore, appearing in "Columbo Fadden" for the Laska company, was in Mexico a short time ago.

"There was an undertaking shop in a small town," he says, "in the window of which the proprietor had tastefully arranged a number of samples of his embalming abilities.

"There was a recruiting station in the same room, and a sign in the window read:

"Welcome! Come join the ranks!"

For Sale By  
**TODD Auto Shop**  
Anderson, S. C.

Young Men

Work, save, sleep, exercise, breathe deep, keep your mind and blood clean, respect others and yourself, be diligent in your business, which is the business of life, the business of good thinking, the business of appreciating time's value, the business of self criticism. Our Dime Pocket Savings Banks will help you to become more self-respecting, if you use it systematically.

**Citizens National Bank**

MARKE'S

Local market yesterday 11-7-8 to 12 cents.

**New York Cotton.**

New York, Nov. 27.—A big trade marked the opening of the cotton market with prices 2 to 25 cents up in sympathy with very strong Liverpool cables. Business was more general than for some weeks and the undertone continued very bullish, not only on strength abroad, but the evident disposition in the south to hold the cotton. Although there was heavy profit taking at times, the market failed to decline and closed within a few points of the top.

	Open.	High.	Low.	Close.
Dec.	12.25	12.41	12.26	12.34
Jan.	12.44	12.47	12.37	12.48
March	12.47	12.78	12.37	12.75
May	12.95	12.99	12.86	12.93

Spots 12.45.

**Liverpool Cotton.**

	Open.	Close.
Nov.	7.34	7.41 1/2
Jan-Feb.	7.24	7.35 1/2
Mar-Apr.	7.21	7.31 1/2

Spots 7.58.  
Sales 8,900.  
Receipts 12,000.